



CATALOGUE

2023

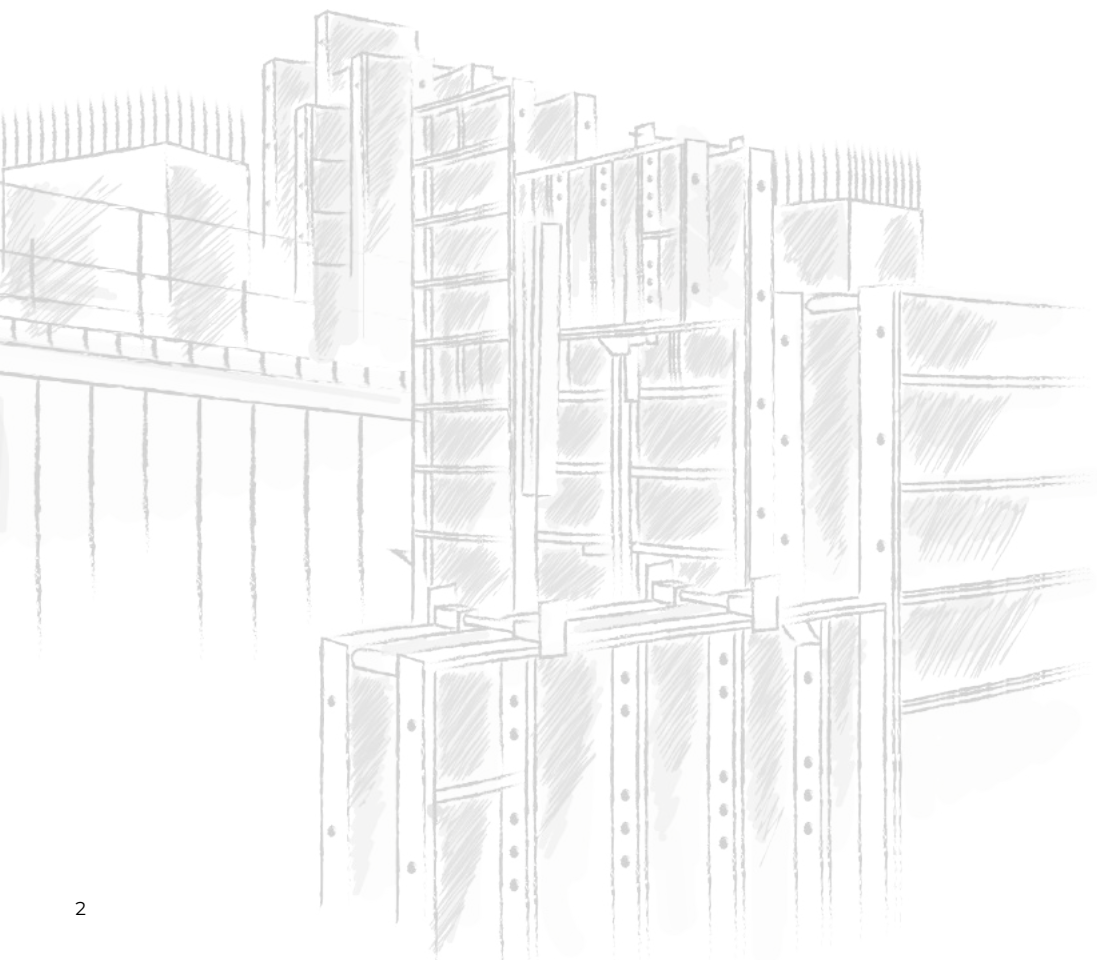


TABLE OF CONTENTS

ABOUT US	4
PRODUCTION	6
SERVICE	8
LOGISTIC CENTERS	10
EXPORT	12
BAUTEKK	14
BAUFRAME	24
BAUFRAME-ALU	34
BAUSCHAL	42
BAUDECK	50
BAUDECK PROP HEAD	58
BAUTREG	60
BAUPROP 20	68
DB ECO 20 KN PROP	70
BT 20 BEAM	72
PLASTIC PANEL	74
SHUTTERING	76



BAUKRANE

ABOUT US

We are a manufacturer of modern formwork solutions. Our slab and wall formwork systems are gaining a growing number of satisfied users, both in Poland and abroad. In fact, our products meet the expectations of customers in nearly 40 countries. The innovative solutions applied in our systems are the answer to the needs of the construction industry.

OWN PRODUCTION FACILITIES

Our formwork systems are manufactured in our own production facilities using the latest technology and full automation, and thanks to detailed quality control at every stage of production, we receive products that meet the highest demands.



FULL AUTOMATION AND ROBOTICS



HIGHEST QUALITY

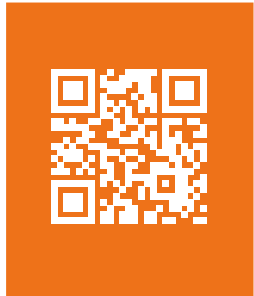


PRECISION



VIEW OUR PRODUCTION FACILITIES

▶ VIDEO



SERVICE CENTERS FOR FORMWORKS

A very important element in our logistics centres is service machines, with which we give a second life to used products in an effort to reduce our carbon footprint.



CNC



FULLY AUTOMATIC
CLEANING



WE CARE ABOUT
THE ENVIRONMENT



IDEAL CONSTRUCTION PARTNER

There are four BAUKRANE logistics centres in Poland: Koszajec near Warsaw, Skawina near Kraków, Byków near Wrocław and Gdańsk. With our logistics centres well connected to each other, we are able to deliver equipment very quickly and efficiently to any construction site in Poland. This makes us a good partner for any construction project.



620

TRANSPORTS
EVERY MONTH



3 100 000 KG

OF GOODS ISSUED
EVERY MONTH



4

LOGISTICS
CENTRES



75 000 m²

STORAGE
AREA



GDAŃSK



KRAKÓW



WARSZAWA

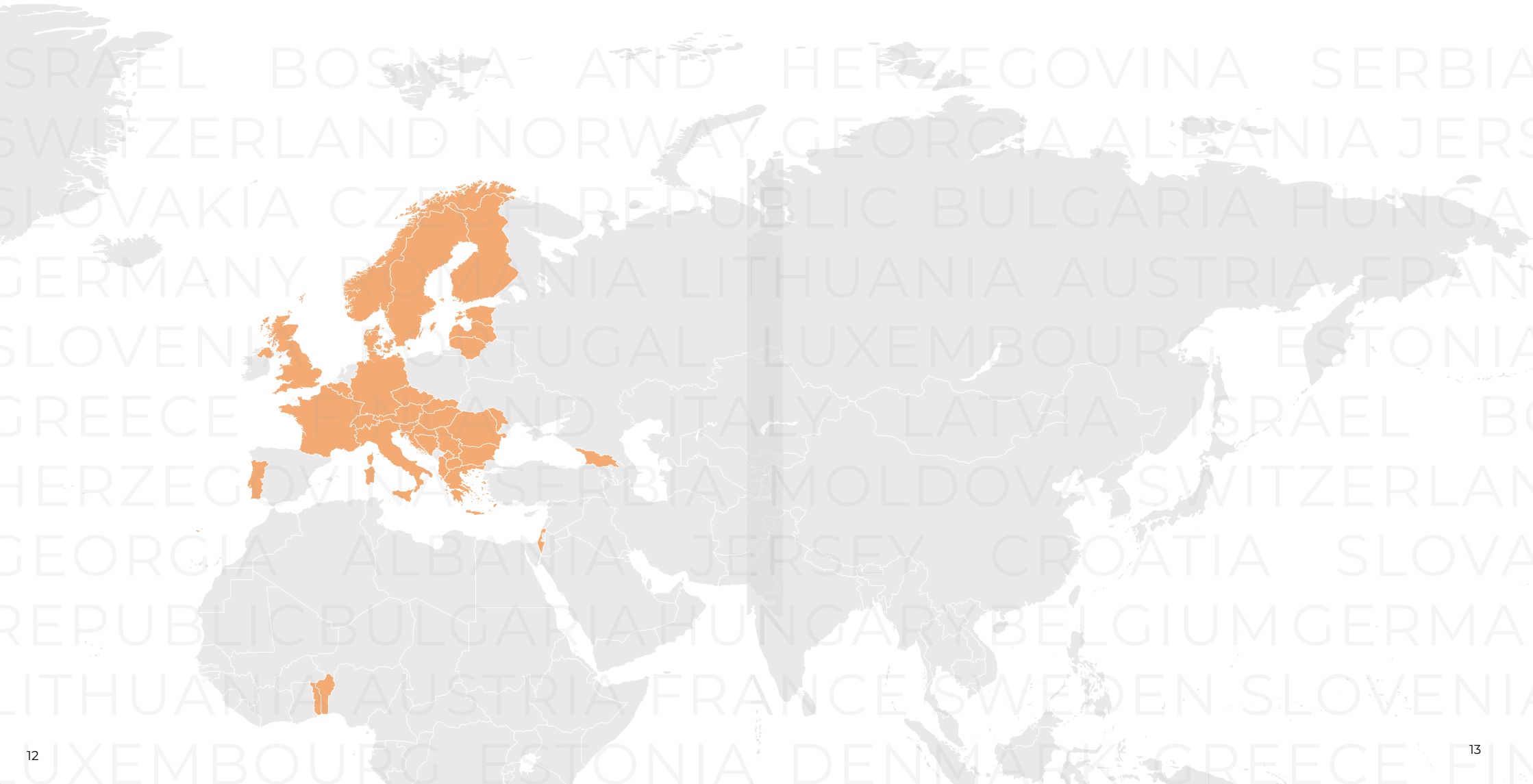


WROCLAW



WE PROVIDE SOLUTIONS WORLDWIDE

Sales is the fastest growing department in our company. Our solutions are delivered regularly to 40 countries worldwide. Our customer base is constantly expanding with new markets. What makes us stand out from our competitors is our own production facilities and appropriate logistical facilities which enable us to deliver goods to every corner of the world.



BAUTEKK

LIGHTWEIGHT FOUNDATION FORMWORK SUITABLE
FOR EVERY CONSTRUCTION SITE



WHAT MAKES IT SPECIAL?



LOW WEIGHT



HIGH DURABILITY



EASY TO ASSEMBLE



SYSTEM OVERVIEW

LIGHTWEIGHT FOUNDATION FORMWORK SUITABLE FOR EVERY CONSTRUCTION SITE.

The Bautekk formwork is a technically advanced product of the highest quality, designed and manufactured in Poland. The outer frame of formwork is formed by a perforated flat bar which is 5 mm thick and 8 cm wide. The inner frame comprises of flat bars joined in a notch, which reinforces the panel structure and enhances the aesthetics of the design. The whole frame is hot-dip galvanised. High quality birch plywood or plywood covered with a 12 mm thick layer of PP plastic is built into the frame. The innovative construction solutions applied, high precision of welds, the use of high quality products in the production processes, as well as a meticulous quality control of every element guarantee the highest durability of formwork, comfort and safety of use.

The frame edge profiles and the cross struts have perforated holes at 5 cm intervals so that the panels may be joined with a shift of 5 cm in height and width or with different multiples of holes spacing. The shuttering skin comprises of high quality, waterproof birch plywood or plywood coated with PP plastic. Tie rod holes are placed in a steel profile which protects plywood from damages during use of formwork. The shuttering skin is inserted into the frame with the use of rivets, making it easy to replace if damaged.

BAUTEKK

DESPITE LIGHTWEIGHT CONSTRUCTION OF OUR FORMWORK PANELS, THE PERMISSIBLE CONCRETE PRESSURE IS 50 kN/m².



SYSTEM CHARACTERISTICS

GALVANISED

The profiles and the frame are made of high quality steel and are hot-dip galvanised.

53 kg

The heaviest module weighs only 53 kg.

50 kN/m²

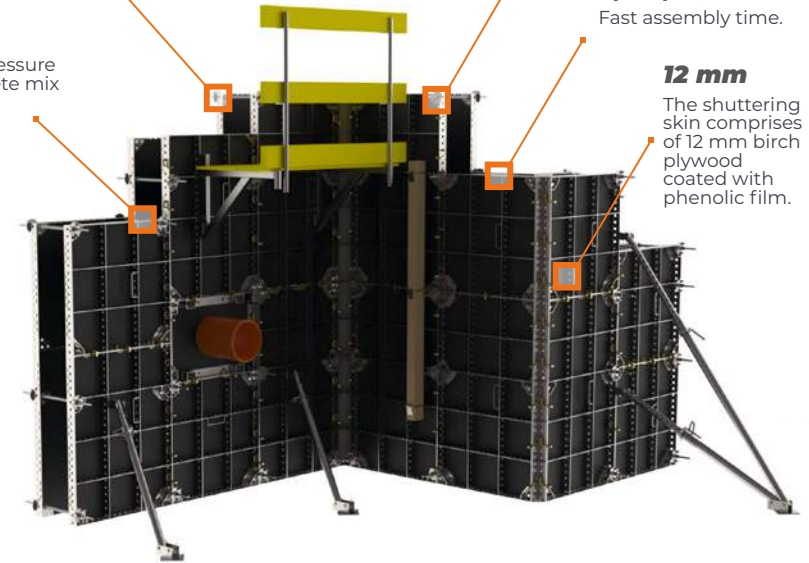
Permissible pressure of fresh concrete mix on formwork.

0,3-0,5h/m²

Fast assembly time.

12 mm

The shuttering skin comprises of 12 mm birch plywood coated with phenolic film.



TECHNICAL PARAMETERS

panels width:	10/20/25/30/45/50/60/70/90 cm
panels height:	90/120/150 cm
universal panels:	60/70/90 cm
inner corner:	15×15/20×20 cm
hinged corner:	8 x 8 cm
frame:	8 cm thick steel profile, completely hot-dip galvanised high quality 12 mm birch plywood
shuttering skin:	12 mm birch plywood coated with phenolic film
average weight:	45 kg/m ²
max. pressure of concrete mix:	50 kN/m ²
compatibility:	Tekko
standard connections:	Bautekk clamp
assembly time:	0,3 – 0,5 h/m ²

BAUTEKK

SYSTEM IN USE



SYSTEM OVERVIEW



**OUR PANELS
CAN BE USED
TO ERECT
ANY TYPE OF
FORMWORK UP
TO 3 M HEIGHT
IN A VERY COST
EFFECTIVE WAY.**

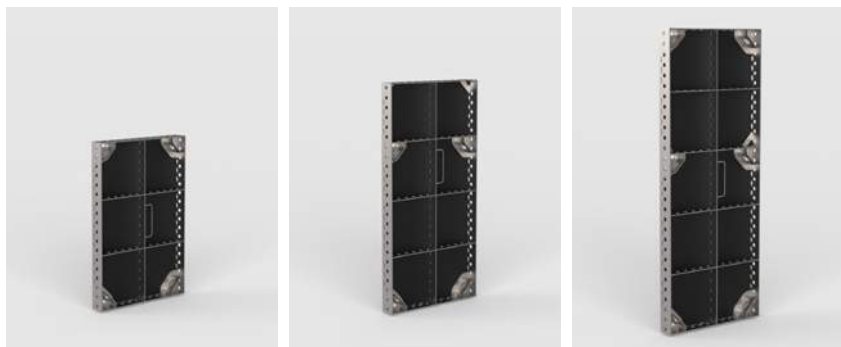
Our brand-named system of lightweight formwork BAUTEKK is an answer to the needs of small and medium- sized companies specialising in reinforced concrete works. Are you building a detached house? A retaining wall? Or maybe you need a simple way to construct a column?

Our panels can be used to erect any formwork up to a height of 3 m at very low cost. As you can assemble it by hand without the need for a crane, the preparation time before pouring concrete is significantly reduced. The panels are designed in such way so that they can be assembled both vertically and horizontally, and high quality birch plywood and the lap-welded frame allow you to use the formwork for years.

Paweł Fidurski
Online Sales Specialist



BAUTEKK PANELS



INDEX	NAME	WEIGHT [kg]
7210S10120	PANEL BAUTEKK 10x120	9,07
7210S10150	PANEL BAUTEKK 10x150	11,2
72100S1090	PANEL BAUTEKK 10x90	6,96
7210S20120	PANEL BAUTEKK 20x120	11,48
7210S20150	PANEL BAUTEKK 20x150	14,08
72100S2090	PANEL BAUTEKK 20x90	8,89
7210S25120	PANEL BAUTEKK 25x120	14,87
7210S25150	PANEL BAUTEKK 25x150	19,34
7210S30120	PANEL BAUTEKK 30x120	16,2
7210S30150	PANEL BAUTEKK 30x150	20,69
72100S3090	PANEL BAUTEKK 30x90	14,49
7210S45120	PANEL BAUTEKK 45x120	22,32
7210S45150	PANEL BAUTEKK 45x150	28,43
72100S4590	PANEL BAUTEKK 45x90	17,68
7210S50120	PANEL BAUTEKK 50x120	23,65
7210S50150	PANEL BAUTEKK 50x150	29,78
72100S5090	PANEL BAUTEKK 50x90	18,77
72100S6090	PANEL BAUTEKK 60 90	20,52
7210S60120	PANEL BAUTEKK 60x120	25,83
7221S60120	PANEL BAUTEKK 60x120 VT	32,88
7210S60150	PANEL BAUTEKK 60x150	32,49
7221S60150	PANEL BAUTEKK 60x150 VT	40,83
72210S6090	PANEL BAUTEKK 60x90 VT	24,68
7221S70120	PANEL BAUTEKK 70x120 VT	36,42
7221S70150	PANEL BAUTEKK 70x150 VT	45,23
72210S7090	PANEL BAUTEKK 70x90 VT	29,48
7210S75120	PANEL BAUTEKK 75x120	31,99
7210S75150	PANEL BAUTEKK 75x150	40,02
72100S7590	PANEL BAUTEKK 75x90	25,22

INDEX	NAME	WEIGHT [kg]
7210S90120	PANEL BAUTEKK 90x120	35,33
7221S90120	PANEL BAUTEKK 90x120 VT	43,31
7210S90150	PANEL BAUTEKK 90x150	44,07
7221S90150	PANEL BAUTEKK 90x150 VT	53,83
72100S9090	PANEL BAUTEKK 90x90	27,84
72210S9090	PANEL BAUTEKK 90x90 VT	35,33

CORNERS



INDEX	NAME	WEIGHT [kg]
72140B8120	HINGED CORNER BAUDEKK 8x8x120	16,9
72140B8150	HINGED CORNER BAUDEKK 8x8x150	20,4
721400B890	HINGED CORNER BAUDEKK 8x8x90	12,6
7210B15120	INNER CORNER BAUTEKK 15x15x120	21
7210B15150	INNER CORNER BAUTEKK 15x15x150	25
72100B1560	INNER CORNER BAUTEKK 15x15x60	11,2
72100B1590	INNER CORNER BAUTEKK 15x15x90	19,34
7210B20120	INNER CORNER BAUTEKK 20x20x120	24
7210B20150	INNER CORNER BAUTEKK 20x20x150	28
72130B0120	OUTER CORNER BAUTEKK 0x120	8
72130B0150	OUTER CORNER BAUTEKK 0x150	10
721300B060	OUTER CORNER BAUTEKK 0x60	5
721300B090	OUTER CORNER BAUTEKK 0x90	6



Our technical advisors are always on hand
- to create an ideal set for you



+48 794 910 849



sales@baukrane.pl

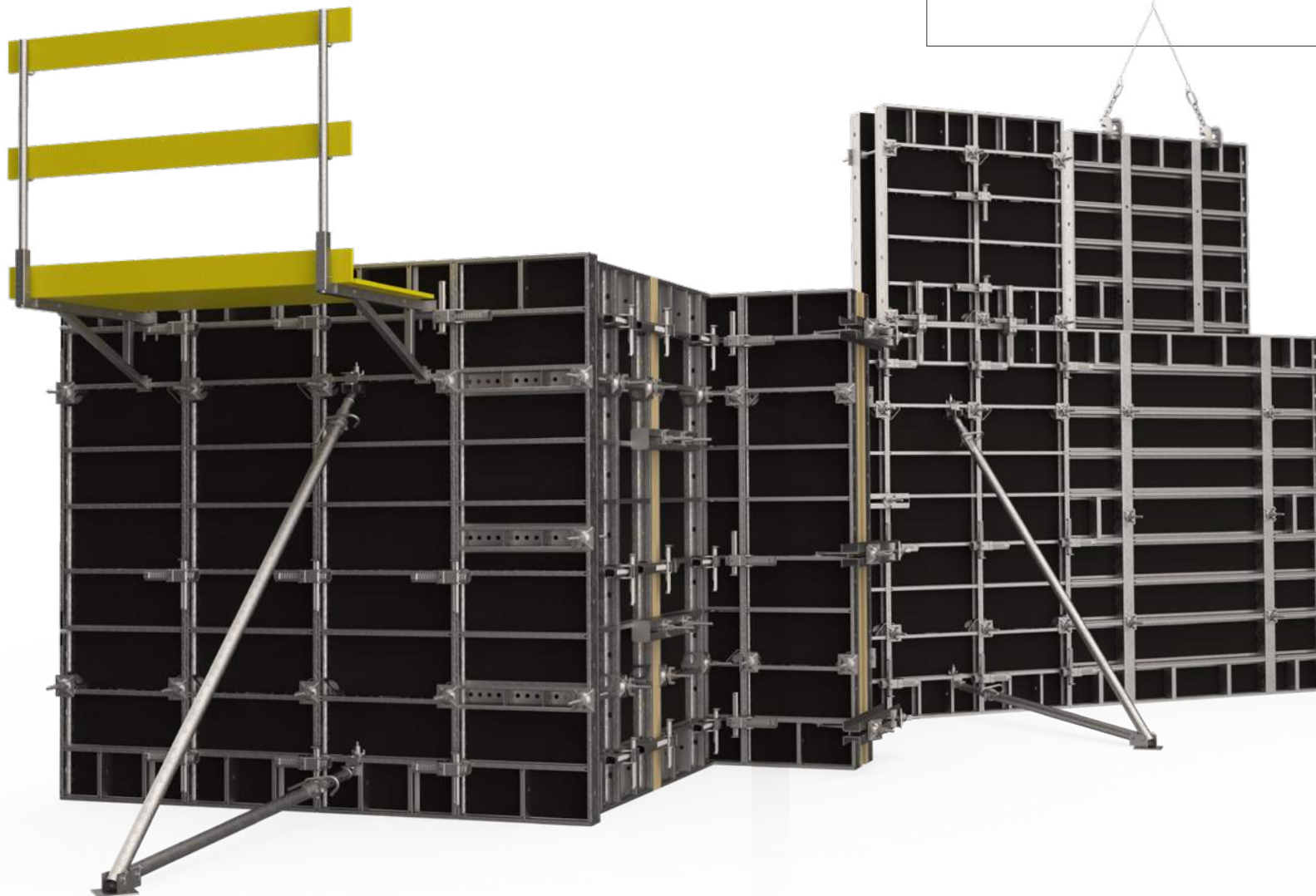
BAUFRAME

UNIVERSAL WALL FORMWORK



WHAT
MAKES IT
SPECIAL?

-  UNIVERSAL
-  DURABILITY
-  SAFETY



SYSTEM OVERVIEW

UNIVERSAL WALL FORMWORK

The BAUFRAME formwork system is a modern technically advanced product of the highest quality, designed from scratch by our engineers. A frame of every steel panel comprises of a closed outer profile with the height of 121 mm and width of 20 mm, and of an inner profile of 105 mm height and 25 mm width. The inner profiles are equipped with function holes for connecting additional accessories. The steel frames are protected against corrosion by hot-dip galvanising. Every steel frame of the BAUFRAME system has an innovative solution in the form of steel profiles with parabolic openings for tie rods which protect the shuttering skin from damage while assembling and disassembling the formwork.

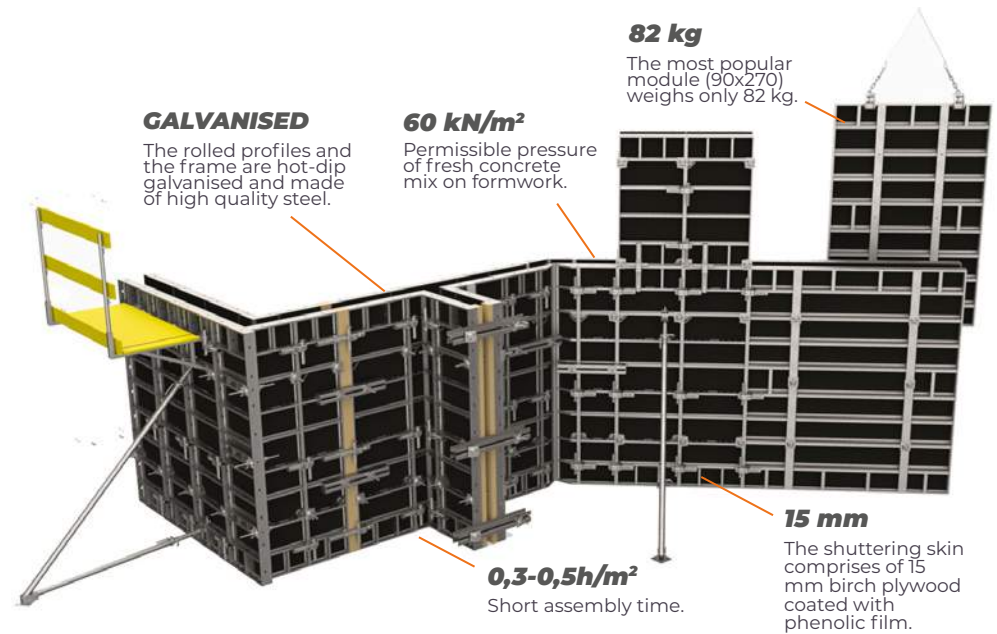
The shuttering skin of the panels is made of high quality 15 mm thick birch plywood, coated with a 220 g/cm² phenolic film. On special request, it is possible to insert plywood coated with plastic (polypropylene) into the frame. The BAUFRAME system panels may be installed both vertically and horizontally. Thanks to a wide range of dimensions, the formwork height can be adjusted to any object height. Thanks to the design of the frame side profile and the wedge clamp, it is possible to connect panels with a shift and a full range adjustment, yet without using additional elements. This allows the formwork to be adjusted to any unevenness of the surface.

BAUFRAME

PERMISSIBLE PRESSURE OF FRESH CONCRETE 60 kN/m².



SYSTEM CHARACTERISTICS:



TECHNICAL PARAMETERS

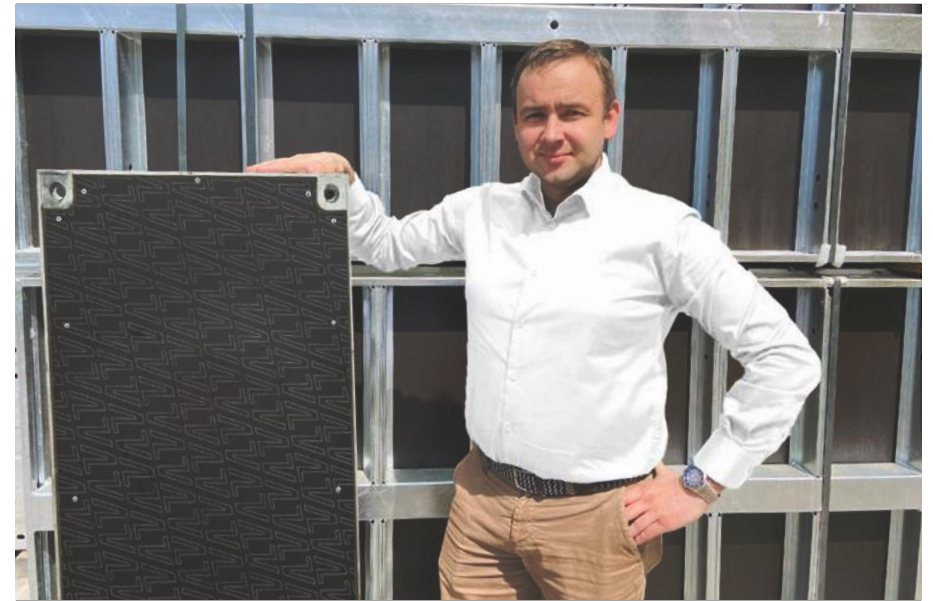
panels width:	25/30/45/50/55/60/65/75/90/120/180/240 cm
panels height:	150/270/300 cm
universal panels:	70/90 cm
inner corner:	30x30 cm
hinged corner:	15 x 15 cm/30 x 30 cm
range of angles:	range of angles from 60 ° to 150 °
frame:	12 cm thick steel profile, the whole frame is hot-dip galvanised.
shuttering skin:	high quality 15 mm birch plywood
average weight:	33,74 kg/m ²
max. pressure of concrete mix:	60 kN/m ²
compatibility:	Bauframe-Alu, Bauschal, Rasto, MidiBox, RHINO
standard connections:	Baukrane wedge clamp
assembly time:	0,3 - 0,5 h/m ²

BAUFRAME

SYSTEM IN USE



SYSTEM OVERVIEW



A PERFECT SOLUTION FOR SMALL AND MEDIUM-SIZED INVESTMENTS.

The BAUFRAME system is very practical formwork, tested on thousands of construction sites, which

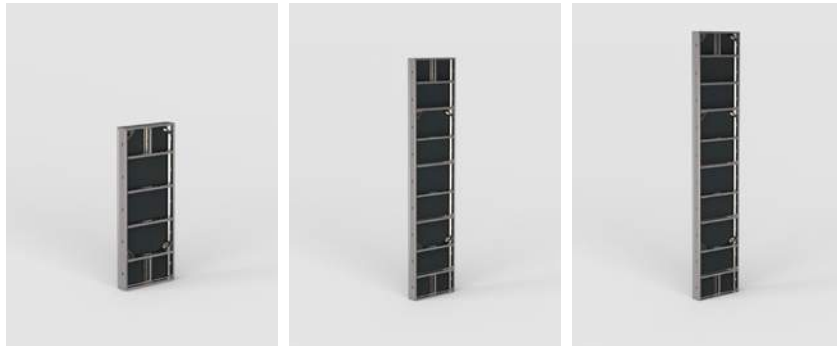
in most cases, may be assembled without a crane. The key element of the system is a wedge clamp, which greatly improves carpentry work. A wide range of sizes allows the system to be adapted to most reinforced concrete constructions,

and the hot-dip galvanised frame along with the high-grade shuttering skin ensure many years of use. The BAUFRAME system is an ideal solution for small and medium-sized construction sites, especially in residential and office construction sector.

Krzysztof Mateńczuk
Director of Gdańsk Branch



BAUFRAME PANELS



INDEX	NAME	WEIGHT
7241025150	PANEL BAUFRAME 25x150	24,55
7241025270	PANEL BAUFRAME 25x270	40,38
7241025300	PANEL BAUFRAME 25x300	45,9
7241030150	PANEL BAUFRAME 30x150	26,4
7241030270	PANEL BAUFRAME 30x270	43,47
7241030300	PANEL BAUFRAME 30x300	49,32
7241045150	PANEL BAUFRAME 45x150	31,5
7241045270	PANEL BAUFRAME 45x270	51,88
7241045300	PANEL BAUFRAME 45x300	57,45
7241050150	PANEL BAUFRAME 50x150	34,69
7241050270	PANEL BAUFRAME 50x270	56,34
7241050300	PANEL BAUFRAME 50x300	63,32
7241055150	PANEL BAUFRAME 55x150	36,54
7241055270	PANEL BAUFRAME 55x270	59,43
7241055300	PANEL BAUFRAME 55x300	66,74
7241060150	PANEL BAUFRAME 60x150	38,34
7241060270	PANEL BAUFRAME 60x270	62,41
7241060300	PANEL BAUFRAME 60x300	70
7241065150	PANEL BAUFRAME 65x150	40,18
7241065270	PANEL BAUFRAME 65x270	65,52
7241065300	PANEL BAUFRAME 65x300	73,42
7241070150	PANEL BAUFRAME 70x150 VZ	57,72
7241070270	PANEL BAUFRAME 70x270 VZ	100,05
7241070300	PANEL BAUFRAME 70x300 VZ	113,4
7241075150	PANEL BAUFRAME 75x150	43,82
7241075270	PANEL BAUFRAME 75x270	71,59
7241075300	PANEL BAUFRAME 75x300	80,1
7241090150	PANEL BAUFRAME 90x150	50,67

INDEX	NAME	WEIGHT
7241090270	PANEL BAUFRAME 90x270	82,11
7241090300	PANEL BAUFRAME 90x300	90,45
7241120270	PANEL BAUFRAME 120x270	157,05
7241120300	PANEL BAUFRAME 120x300	175,69
7241180270	PANEL BAUFRAME 180x270	248,52
7241190150	PANEL BAUFRAME 90x150 VZ	71,96
7241190270	PANEL BAUFRAME 90x270 VZ	124,34
7241190300	PANEL BAUFRAME 90x300 VZ	140,48
7241240270	PANEL BAUFRAME 240x270	302,58
7241240300	PANEL BAUFRAME 240x300	344,85

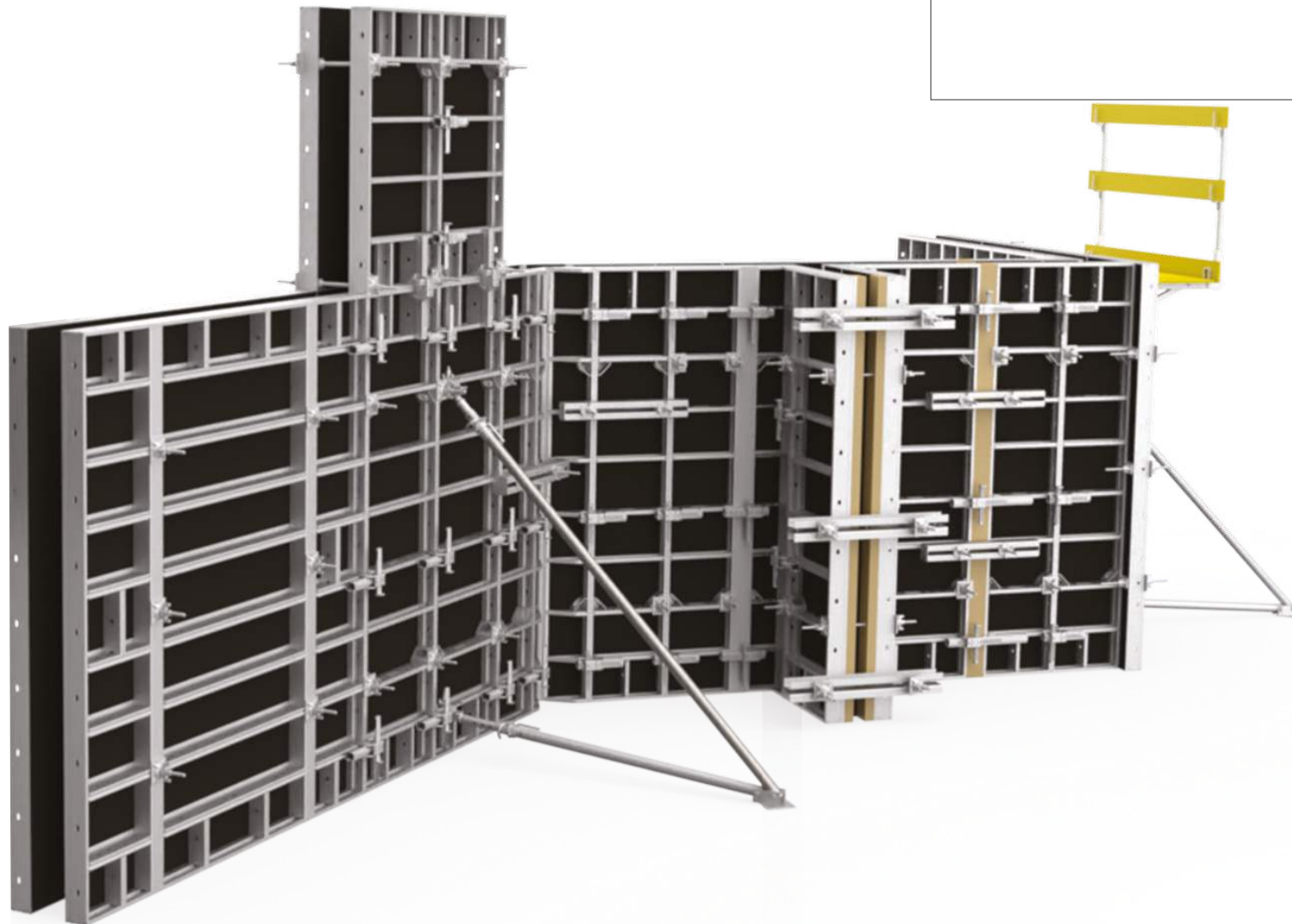
CORNERS



INDEX	NAME	WEIGHT
7241330150	INSIDE CORNER BAUFRAME 30x30x150	42,46
7241330270	INSIDE CORNER BAUFRAME 30x30x270	72,2
7241330300	INSIDE CORNER BAUFRAME 30x30x300	81,2
7241400150	OUTSIDE CORNER BAUFRAME 0x0x150	15,68
7241400270	OUTSIDE CORNER BAUFRAME 0x0x270	28,02
7241400300	OUTSIDE CORNER BAUFRAME 0x0x300	31,1
7241515150	HINGED CORNER BAUFRAME 15x15x150	37,62
7241515270	HINGED CORNER BAUFRAME 15x15x270	67,36
7241515300	HINGED CORNER BAUFRAME 15x15x300	74,8
7241530150	HINGED CORNER BAUFRAME 30x30x150	47,83
7241530270	HINGED CORNER BAUFRAME 30x30x270	82,35
7241530300	HINGED CORNER BAUFRAME 30x30x300	92,42

BAUFRAME-ALU

UNIVERSAL ALUMINIUM WALL FORMWORK



**WHAT
MAKES IT
SPECIAL?**



LOW WEIGHT



HIGH DURABILITY



EASY TO ASSEMBLE

SYSTEM OVERVIEW

UNIVERSAL ALUMINIUM WALL FORMWORK

BAUFRAME-ALU

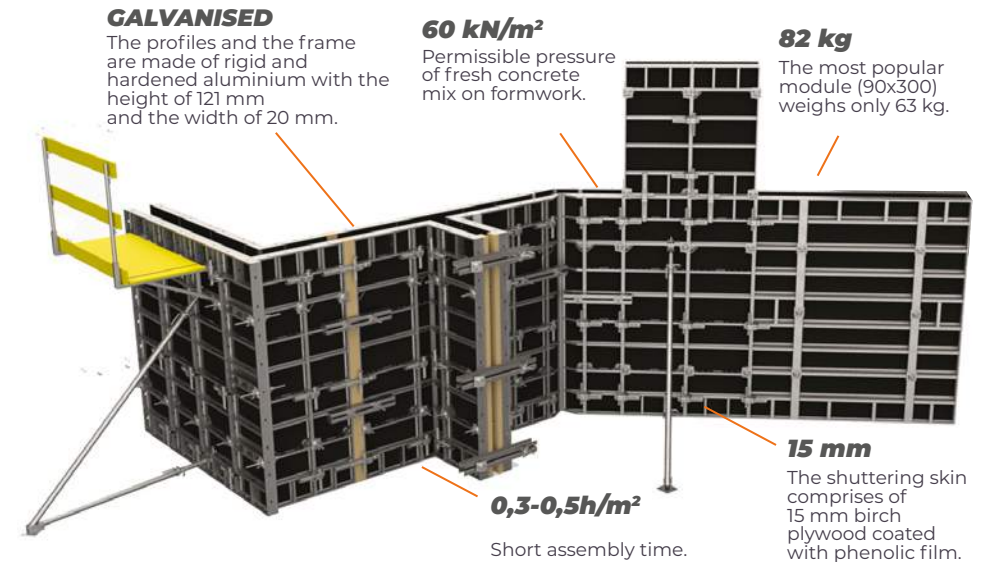
The BAUFRAME ALU formwork is a modern and technically advanced system of the highest quality, designed from scratch by the BAUKRANE engineers. The frame of every BAUFRAME ALU panel comprises of an aluminium outer profile with the height of 121 mm and width of 20 mm, and of an aluminium inner profile of 105 mm height and 20 mm width. The inner profiles are equipped with function holes for connecting additional accessories. The frame profiles are made of rigid hardened aluminium.

Aluminium panels, unlike steel panels, have through holes in plywood, the edges of which have been protected by aluminium rings. They have been designed to serve a similar function as profiles in steel panels - they effectively protect plywood, significantly increase the durability of the shuttering skin and extends the time between its replacement. The shuttering skin of the panels is made of high quality 15 mm thick birch plywood, coated with a 220 g/cm² phenolic film. On special request, it is possible to insert plywood coated with plastic (polypropylene) into the frame.

PERMISSIBLE PRESSURE OF FRESH CONCRETE EQUALS 60 kN/m².



SYSTEM CHARACTERISTICS:



TECHNICAL PARAMETERS

panels width:	25/30/45/50/55/60/65/75/90 cm
panels height:	150/270/300 cm
universal panels:	70/90 cm
inner corner:	30x30 cm
hinged corner:	15 x 15 cm/30 x 30 cm,
range of angles:	range of angles from 60 ° to 150 °
frame:	12 cm thick steel profile, the whole frame is hot-dip galvanised.
shuttering skin:	high quality 15 mm birch plywood
average weight:	23,45 kg/m ²
max. pressure of concrete mix:	60 kN/m ²
compatibility:	Bauframe, Bauschal, Rasto, MidiBox, RHINO
standard connections:	Baukranet wedge clamp
assembly time:	0,3 - 0,5 h/m ²

BAUFRAME-ALU

SYSTEM IN USE



SYSTEM OVERVIEW



CRANE-FREE MANUAL ASSEMBLY

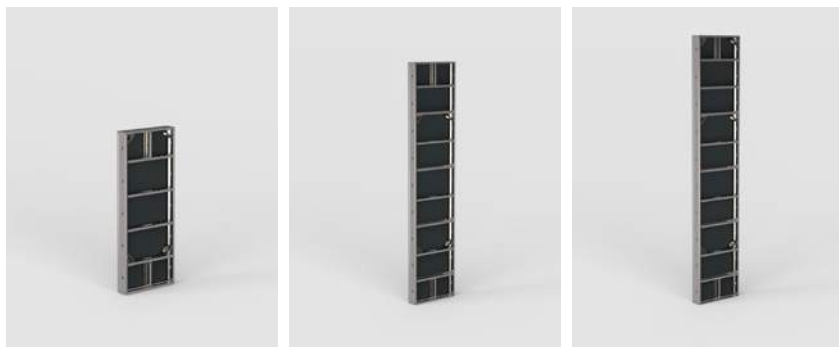
The aluminium version of the BAUFRAME wall formwork is a perfect solution for small and medium-sized projects, especially for those where no crane is available.

The weight of the largest module is only 63 kg, which significantly increases the mobility of the formwork and allows it to be assembled manually. And most importantly, despite its 30% lower weight, the formwork has exactly the same strength as its steel version.

Kamil Tryniszewski
Online Sales Specialist



BAUFRAME-ALU PANELS



INDEX	NAME	WEIGHT
7242030150	PANEL BAUFRAME ALU 30x150	18,95
7242030270	PANEL BAUFRAME ALU 30x270	27,66
7242030300	PANEL BAUFRAME ALU 30x300	30,81
7242035270	PANEL BAUFRAME ALU 35x270	29,79
7242040270	PANEL BAUFRAME ALU 40x270	32,09
7242045150	PANEL BAUFRAME ALU 45x150	22,25
7242045270	PANEL BAUFRAME ALU 45x270	34,35
7242045300	PANEL BAUFRAME ALU 45x300	38,19
7242050150	PANEL BAUFRAME ALU 50x150	24,38
7242050270	PANEL BAUFRAME ALU 50x270	36,67
7242050300	PANEL BAUFRAME ALU 50x300	40,75
7242055150	PANEL BAUFRAME ALU 55x150	25,57
7242055270	PANEL BAUFRAME ALU 55x270	39
7242055300	PANEL BAUFRAME ALU 55x300	43,31
7242060150	PANEL BAUFRAME ALU 60x150	26,9
7242060270	PANEL BAUFRAME ALU 60x270	41,25
7242060300	PANEL BAUFRAME ALU 60x300	45,8
7242065150	PANEL BAUFRAME ALU 65x150	28,14
7242065270	PANEL BAUFRAME ALU 65x270	43,57
7242065300	PANEL BAUFRAME ALU 65x300	48,36
7242070270	PANEL BAUFRAME ALU 70x270	45,89
7242075150	PANEL BAUFRAME ALU 75x150	30,77
7242075270	PANEL BAUFRAME ALU 75x270	49
7242075300	PANEL BAUFRAME ALU 75x300	54,24
7242090150	PANEL BAUFRAME ALU 90x150	35,47
7242090270	PANEL BAUFRAME ALU 90x270	56,76
7242090300	PANEL BAUFRAME ALU 90x300	62,69

INDEX	NAME	WEIGHT
7242170150	PANEL BAUFRAME ALU 70x150 VZ	39,85
7242170270	PANEL BAUFRAME ALU 70x270 VZ	67,02
7242170300	PANEL BAUFRAME ALU 70x300 VZ	75,38
7242190300	PANEL BAUFRAME ALU 90x300 VZ	97

CORNERS



INDEX	NAME	WEIGHT
7242230150	INSIDE CORNER BAUFRAME ALU 30x30x150	28
7242230270	INSIDE CORNER BAUFRAME ALU 30x30x270	40,26
7242230300	INSIDE CORNER BAUFRAME ALU 30x30x300	44,74

CHECK OUT
OUR FULL OFFER

www.baukrane.pl



BAUSCHAL

HEAVY DUTY FORMWORK THAT MAKES THE DIFFERENCE



WHAT MAKES IT SPECIAL?



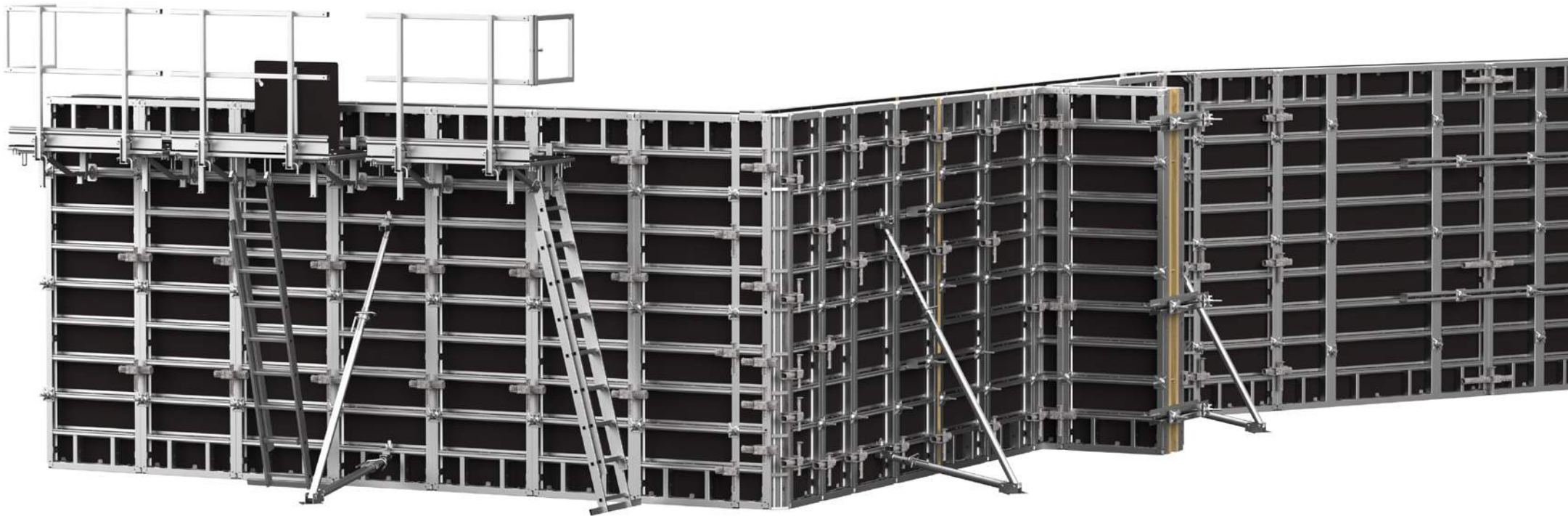
COMPATIBILITY WITH THE
BAUFRAME SYSTEM



HIGH DURABILITY



HIGH QUALITY FORMWORK
IMPRINT



SYSTEM OVERVIEW

HEAVY DUTY FORMWORK THAT MAKES THE DIFFERENCE

BAUSCHAL

The Bauschal wall formwork system is a versatile and professional frame formwork, designed for extensive use in the construction industry; excellent when carrying out a wide range of applications such as: reinforced concrete walls in residential and industrial construction, vertical partitions in engineering construction, reinforced concrete columns and cores, massive foundations. The system has been designed to meet all technical, economical and safety requirements for every residential and industrial construction. Thanks to its construction, this formwork is easy and comfortable to handle by hand or with a crane on site. The Bauframe formwork is a technically advanced product of the highest quality, designed and manufactured by Baukrane using the latest tools and methods. Steel panels comprise of a closed outer profile with the height of 121 mm and width of 55 mm, and of an inner profile of 99 mm height and 80 mm width. The use of the highest quality materials, high precision of manufacturing, pioneering design solutions and meticulous quality control at every stage of product manufacturing, ensure the highest durability of the formwork and the comfort and safety of its use. Our formwork can be used for demanding architectural tasks, thanks to the high quality of the imprint and 100 cm panels.

PERMISSIBLE PRESSURE OF FRESH CONCRETE WHEN USING TIE RODS Ø20 EQUALS 80kN/M².



SYSTEM CHARACTERISTICS:

80 kN/m²

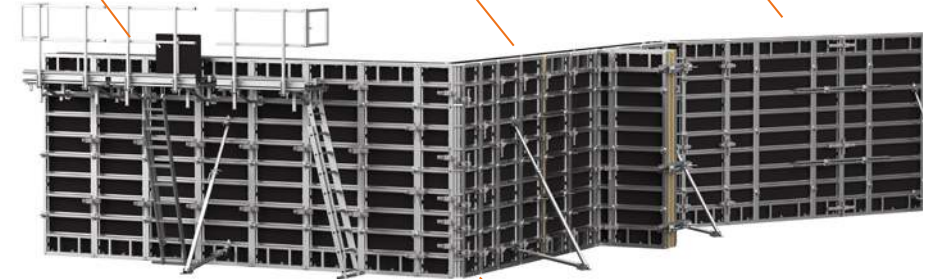
Permissible pressure of fresh concrete when using tie rods Ø20.

STEEL PROFILES

Steel profiles with conical holes for tie rods protect the shuttering skin of panels from damage during assembling and disassembling of the formwork.

COMPATIBILITY:

The Bauschal system may be complemented with the Bauframe elements.



21 mm

The shuttering skin comprises of 21 mm birch plywood coated with phenolic film.

HOT-DIP GALVANISED

The steel frames are protected against corrosion by hot-dip galvanising.

TECHNICAL PARAMETERS

BAUSCHAL

panels height:	30/45/60/75/100/120/240cm
panels height:	150/270/300 cm
universal panels:	90 cm
inner corner:	30x30 cm
frame:	12 cm thick steel profile which is entirely hot-dipped galvanised.
shuttering skin:	high quality 21 mm birch plywood
average weight:	55,80 kg / m ²
max. pressure of concrete mix:	80 kN / m ²
compatibility:	Bauframe-Alu, Rasto, MidiBox, RHINO
standard connections:	Baukrane wedge clamp
assembly time:	0,3 - 0,5 h / m ²

SYSTEM IN USE



SYSTEM OVERVIEW



OUR BAUSCHAL WILL CHANGE THE WALL FORMWORK MARKET

The BAUSCHAL system is a well-thought-out product, not only technically and functionally, but also qualitatively, that will bring a new perspective to the use of formwork on construction sites. The knowledge and experience of our team made it possible to develop a solution previously unheard of, in the form of a set of different-system profiles and the idea itself was supported by a patent application. This solution allows the Bauschal system to be combined with our medium-sized systems such as BAUFRAME and BAUFRAME ALU, as well as with other compatible formwork systems, which in turn makes it convenient to use on site, reduces costs of storage and transport. We are convinced that the solutions used will find recognition among customers and the BAUSCHAL system will become an attractive alternative to the previously used wall formwork.

Marek Wilk
Production Director



BAUDECK

MODERN SLAB FORMWORK,
IN A FORM OF A PANEL SYSTEM



WHAT MAKES IT SPECIAL?



HIGH EFFICIENCY



EASY TO ASSEMBLE



SHORT ASSEMBLY TIME



SYSTEM OVERVIEW

MODERN SLAB FORMWORK SYSTEM

The BAUDECK slab formwork is a lightweight and versatile system, produced by BAUKRANE, and for a wide range of applications, especially in large-scale constructions. The system has been designed to meet all technical and economic conditions for the tasks set before it. Due to dimensions of the elements, the BAUDECK system is also useful when constructing smaller and more complex slab geometries. Thanks to its light and sturdy design, the system is easy and convenient to install manually on site. The outer frame of the formwork comprises of a 14 cm aluminium profile. The inside cross bars of the frame are made of aluminium profile with the height of 73 mm and thickness 2 mm. The whole element was powder coated, which reduces concrete adhesion and makes cleaning easier. A high-quality 10 mm birch plywood is built into the frame. The shuttering skin is inserted into the frame with the use of rivets, making it easy to replace if damaged.

Thanks to the wide range of panel sizes, as well as the adjustment and transverse beams, the BAUDECK formwork can be adapted to any surface without the need for additional infills. Contrary to traditional timber formwork, the BAUDECK formwork system allows you to achieve significant savings of time and costs. Thanks to its dimensions and weight, as well as its simplicity of installation, it is possible to erect formwork at a rate of 10 m² per hour.

— BAUDECK

THE SIMPLICITY AND INTUITIVENESS OF THE SYSTEM DESIGN MEANS THAT ONLY 2 PEOPLE ARE REQUIRED TO ASSEMBLE THE FORMWORK.



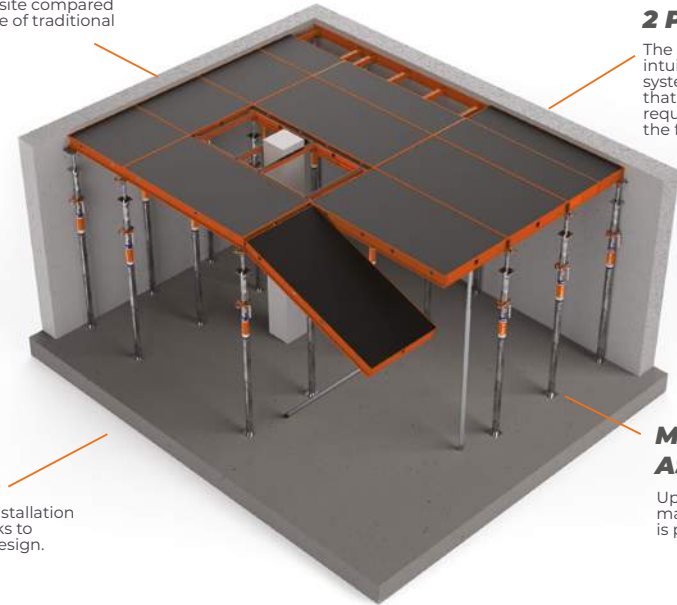
SYSTEM CHARACTERISTICS:

SAVING

Significant optimisation of costs on site compared with the use of traditional formwork.

2 PEOPLE

The simplicity and intuitiveness of the system design means that only 2 people are required to assemble the formwork.



10 m²/h

Improved installation speed thanks to formwork design.

MANUAL ASSEMBLY

Up to a height of 3.5 m, manual installation is possible.

TECHNICAL PARAMETERS

panels width:	45/60/75/90 / 180 cm
panels height:	90/180 cm
adjustment panels:	55-90 x 90 cm/55-90 x 180 cm
frame:	14 cm powder-coated aluminium profile
shuttering skin:	high quality birch plywood
average weight:	panel 90×90 cm = 16,00 kg panel 90×180 cm = 27,00 kg panel 180×180 cm = 53,14 kg
compatibility:	TOPEC
assembly time:	0,3 – 0,4 h/m ²

— BAUDECK

SYSTEM IN USE



SYSTEM OVERVIEW



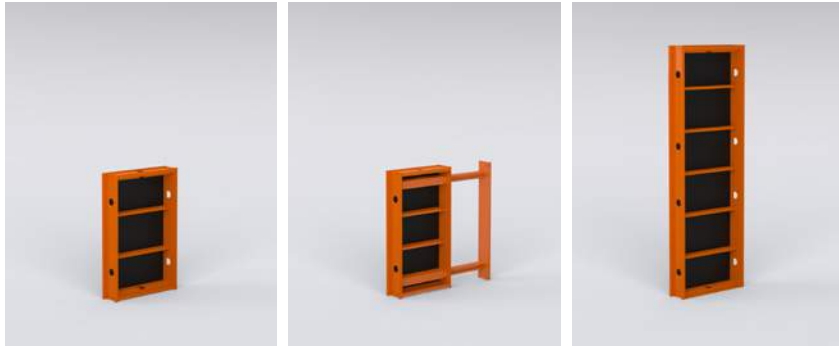
A PERFECT SOLUTION FOR THOSE WHO VALUE THEIR TIME AND ARE COST-CONSCIOUS.

The BAUDECK slab formwork is a perfect solution for those who value their time and are cost-conscious during construction projects. Fewer people needed to assemble and disassemble formwork, shorter erection time, less space required for storage and much easier transport result in considerable savings.

Piotr Lulek
Technical and Sales Specialist



BAUDECK PANEL



INDEX	NAME	WEIGHT
714005590	PANEL BAUDECK UNI 90x90	15
7140045090	PANEL BAUDECK 45x90	10,05
7140045180	PANEL BAUDECK 45x180	17,2
7140055180	PANEL BAUDECK UNI 90x180	24,5
7140060090	PANEL BAUDECK 60x90	11,76
7140060180	PANEL BAUDECK 60x180	20,6
7140075090	PANEL BAUDECK 75x90	13,4
7140075180	PANEL BAUDECK 75x180	23,6
7140090090	PANEL BAUDECK 90x90	16
7140090180	PANEL BAUDECK 90x180	27
7140180180	PANEL BAUDECK 180x180	53,14

ACCESSORIES



INDEX	NAME	WEIGHT
7140000001	UPRIGHT BAUDECK	4,75
7140000002	BAUDECK MOUNTING BAR	3,2
7140000010	BAUDECK HEAD	2,5
7140000011	BAUDECK CORNER HEAD COVER	0,82
7140000013	BAUDECK HEAD SUPPORT SHOE	0,6
7140000110	BAUDECK DROPHEAD	8,2
7140000210	BAUDECK SAFETY HEAD	3,5
7214000001	BAUDECK TRAVERSE BEAM	2,88
7214000005	BOLT M12X40 GALVANIZED	0,2
7214000006	WASHER NUT M12 GALVANIZED	0
7214000007	NUT M12 GALVANIZED	0
7214000008	BAUDECK EDGE SUPPORT	1,8
7214000011	BAUDECK TRAVERSE BEAM 75	3,6
7214000021	BAUDECK TRAVERSE BEAM 90	3,51
7214000030	SCREW M 12 X 30 GALVANIZED	1
7214000090	ADJUSTMENT BEAM 90	3,6
7214000180	ADJUSTMENT BEAM 180	7,2
7214001180	PLASTIC INFILL 180	0,72
7400000021	SUPPORT PILLAR GRIP	3,9
7500000909	PROP PROTECTION	0,14

BAUDECK

CHECK OUT
OUR FULL OFFER

www.baukrane.pl



Our technical advisors are always on hand
- to create an ideal set for you



+48 794 910 849



sales@baukrane.pl

BAUDECK DROP HEAD

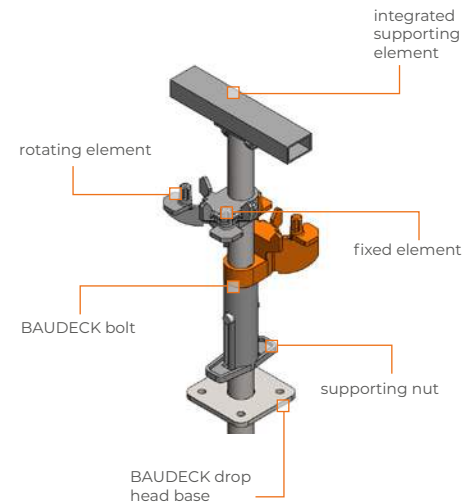


BAUDECK

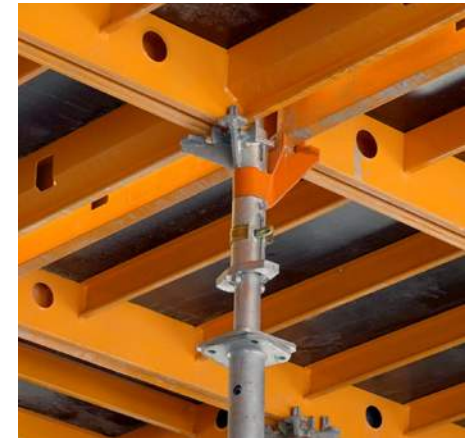
Using BAUDECK drop heads is an alternative to auxiliary support. It is much faster and more convenient than traditional methods.

The drop head is equipped with an integrated slab part supporting slab panels after disassembling slab formwork. It also allows to keep the temporary support in one line, which will facilitate the distribution of stresses in a construction.

The decision to use drop heads in the formwork should be made before erecting it. This is because it affects the planned grid of Baudeck panel placement on the floor plan.



INDEX	NAME	WEIGHT
7140000110	BAUDECK DROP HEAD	8,20 kg



Our technical advisors are always on hand
- to create an ideal set for you



+48 794 910 849



sales@baukrane.pl

BAUTREG

CLASSICS OF THE HIGHEST QUALITY



WHAT MAKES IT SPECIAL?



VERSATILITY



COST-EFFECTIVENESS



HIGH LOAD BEARING
CAPACITY



SYSTEM OVERVIEW

CLASSICS OF THE HIGHEST QUALITY

BAUTREG

The BAUTREG slab formwork system is traditional formwork of the highest quality in a new version. The BAUTREG system is an universal beam solution to be used on every building site. The basic elements of the systems are high-quality timber beams BT20 which have low weight (5,0kg/mb) and high strength parameters. They work with steel props with the load bearing capacity of 20kN, equipped with heads and tripods.

The most distinctive features of the BAUTREG system include a clear assembly diagram and the ability to adjust elements of the system to any shape of the floorplan. High load bearing capacity of the system (possibility to erect ceilings up to 50 cm thick) with high accuracy of work at the same time, is an additional advantage.

HIGH LOAD BEARING CAPACITY (POSSIBILITY TO ERECT CEILINGS UP TO 50 CM THICK)



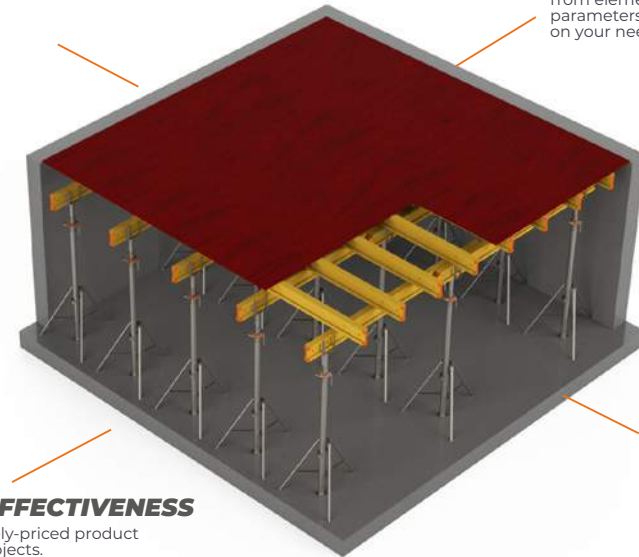
SYSTEM CHARACTERISTICS:

ANY SHAPE

It is possible to adjust the elements of the system to any shape of the projection.

VERSATILITY

It is possible to create a set from elements of different parameters, depending on your needs.



COST-EFFECTIVENESS

Competitively-priced product for small projects.

HIGH LOAD BEARING CAPACITY

Excellent quality materials of units used allow erect ceilings up to 50 cm thick.

WHAT MAKES THE BAUTREG SYSTEM STAND OUT?

BAUTREG

- clear assembly diagram,
- can be adapted to any shape of the projection,
- durable elements made of high-quality materials,
- selected elements may be used in any configuration,
- high load bearing capacity,
- manufactured with great accuracy.

SYSTEM IN USE



SYSTEM OVERVIEW



STURDIER GIRDERS, STRONGER PROPS, MORE SOLID PLYWOOD

Beam formwork is a solution that has been known for many years and is one of the most popular slab solutions on construction sites. When designing BAUTREG, we aimed at achieving the highest quality of this solution - sturdier beams, stronger props and more solid plywood. We recommend specific components of the system, however, its great advantage is that it can be adapted and tailored to your needs and financial potential. That is why BAUTREG is a truly universal solution for everyone.

Wojciech Chruścicki
Director of Wrocław Branch



BAUPROP PROP 20



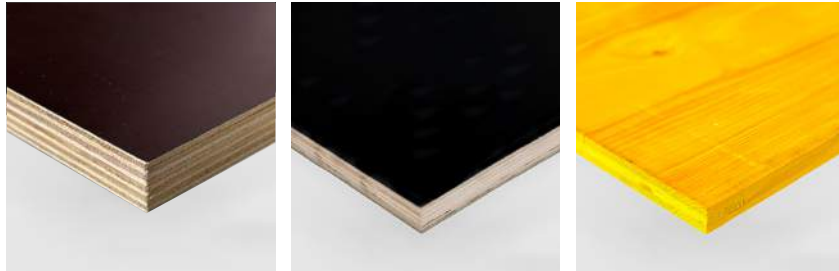
INDEX	NAME	DIMENSIONS	WEIGHT
7120B20300	BAUPROP 20 - 300 prop	171,5 - 300,0 cm	16,80 kg
7120B20350	BAUPROP 20 - 350 prop	195,0 - 350,0 cm	18,80 kg
7120B20400	BAUPROP 20 - 400 prop	221,0 - 400,0 cm	22,50 kg
7120B20550	BAUPROP 20 - 550 prop	296,0 - 550,0 cm	37,50 kg

BT20 BEAM



INDEX	NAME	DIMENSIONS	WEIGHT
711000P150	BT20 beam 190 cm	8 × 20 × 190 cm	9,50 kg
711000F210	BT20 beam 210 cm	8 × 20 × 210 cm	10,50 kg
711000F245	BT20 beam 245 cm	8 × 20 × 245 cm	12,25 kg
711000F265	BT20 beam 265 cm	8 × 20 × 265 cm	13,25 kg
711000F290	BT20 beam 290 cm	8 × 20 × 290 cm	14,50 kg
711000F330	BT20 beam 330 cm	8 × 20 × 330 cm	16,50 kg
711000F360	BT20 beam 360 cm	8 × 20 × 360 cm	18,00 kg
711000F390	BT20 beam 390 cm	8 × 20 × 390 cm	19,50 kg
711000F420	BT20 beam 420 cm	8 × 20 × 420 cm	21,00 kg

PANELS AND PLYWOOD



INDEX	NAME	DIMENSIONS	WEIGHT
7307125250	Birch plywood 2500x1250x21	250 × 125 × 2,1 cm	47,41 kg
7306122244	Birch plywood 2440x1220x21	244 × 122 × 2,1 cm	44,80 kg
7308125250	Birch plywood 2500x1250x18	250 × 125 × 1,8 cm	41,09 kg
7303125250	Standard poplar plywood 2500x1250x21	250 × 125 × 2,1 cm	34,38 kg
7302125250	Standard poplar plywood ECO+ 2500x1250x21	250 × 125 × 2,1 cm	35,00 kg
7301125250	Poplar plywood ECO 2500x1250x21	250 × 125 × 2,1 cm	34,38 kg
7318125250	Poplar plywood ECO 2500x1250x18	250 × 125 × 1,8 cm	30,00 kg
7102150150	PANEL 3-S PREMIUM 500x1500x21	50 × 150 × 2,1 cm	7,50 kg
7102150200	PANEL 3-S PREMIUM 500x1500x21	50 × 200 × 2,1 cm	10,00 kg
7102150250	PANEL 3-S PREMIUM 500x1500x21	50 × 250 × 2,1 cm	12,50 kg
7102150300	PANEL 3-S PREMIUM 500x1500x21	50 × 300 × 2,1 cm	15,00 kg

ACCESSORIES



INDEX	NAME	DIMENSIONS	WEIGHT
7030000011	EG FORK HEAD	-	1,60 kg
7130S00010	EG FOUR-WAY HEAD	-	2,00 kg
7130000010	HDG FOUR-WAY HEAD	-	2,30 kg
7130000051	Tripod 5.0 kg EG	-	5,00 kg
7130000050	TRIPOD 6.0 kg HDG	-	6,00 kg
7130000900	STACKING ANGLES	-	39,50 kg
7130000904	STACKING ANGLES ECO	-	18,00 kg
7130000905	NET BASKET	-	19,02 kg
7460000036	ADJUSTABLE RAILING POST	-	6,40 kg

BAUPROP 20

TOP-NOTCH STEEP PROP BAUPROP 20.

— BAUPROP 20 —

Bauprop 20 steel props with a smooth height adjustment and a self-cleaning thread have been designed to transfer vertical compressive loads in temporary supports of the ceiling and in beam and panel formwork.

It consists of two tubes: the internal one with pegging holes and the external one equipped with a thread, as well as an adjusting nut, a locking pin, and two metal plates creating the upper foot and base foot. The prop is hot-dip galvanised, and the nut is additionally powder-coated in a distinctive orange colour.

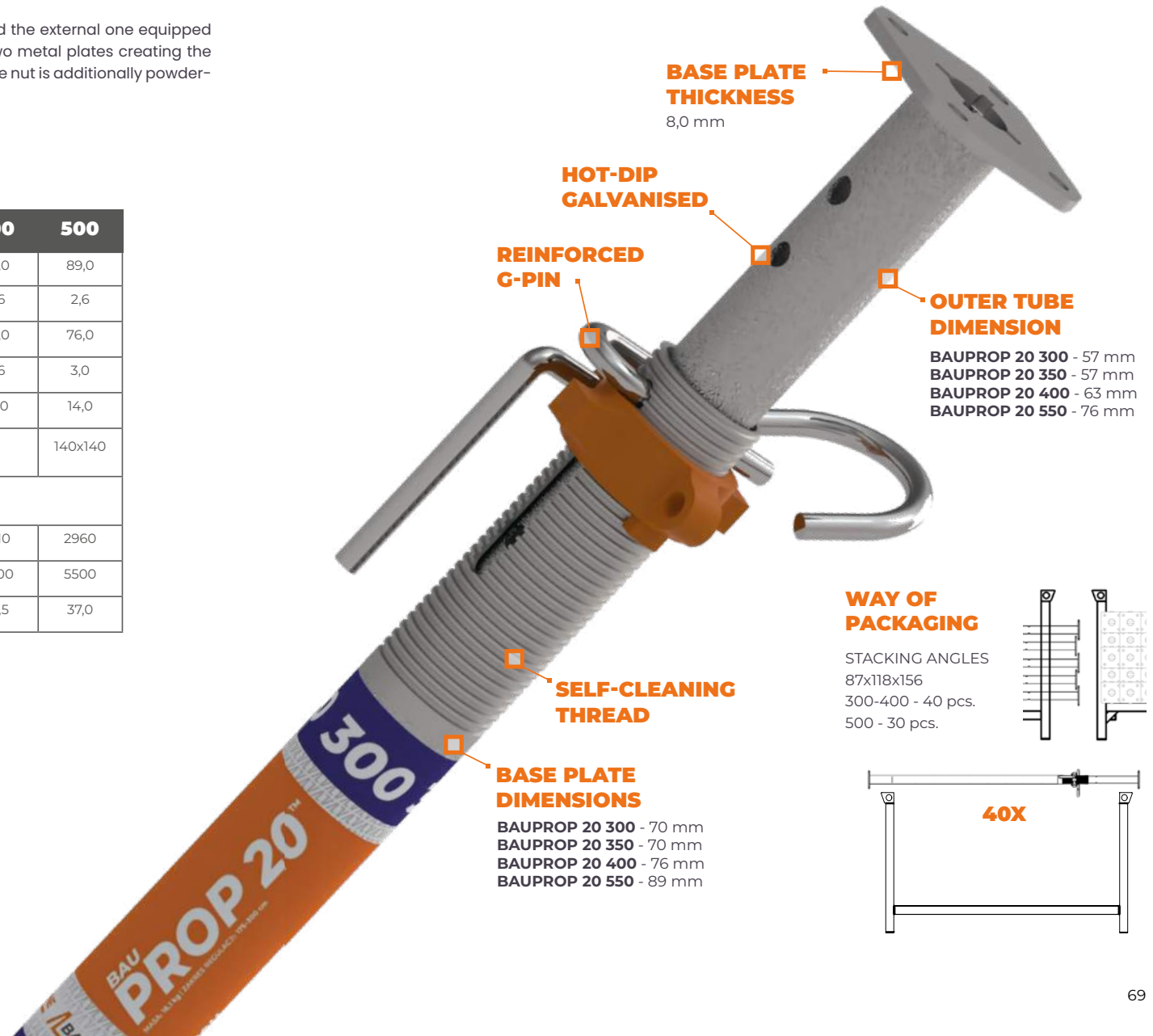
PROP TYPE	300	350	400	500
external tube diameter [mm]	70,0	70,0	76,0	89,0
wall thickness of external tube [mm]	2,6	2,6	2,6	2,6
external tube diameter [mm]	57,0	57,0	63,0	76,0
wall thickness of internal tube [mm]	2,6	2,8	2,6	3,0
blocking pin diameter [mm]	14,0	14,0	14,0	14,0
upper and bottom base plate dimensions [mm]	120x120			140x140
base plate thickness base plate dimensions [mm]	8,0			
min. working length [mm]	1715	1950	2210	2960
max. working length [mm]	3000	3500	4000	5500
weight [kg]	16,8	18,8	22,5	37,0

Props with a load bearing capacity of 20kN based on EN-1065 norm and a high safety facto, has the Sigma Certificate issued by SIGMA KARLSRUHE GmbH.



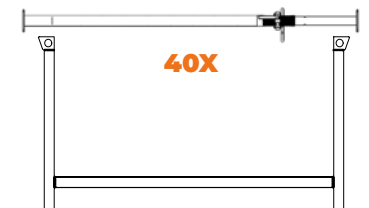
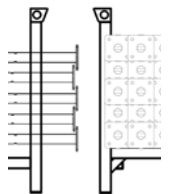
THE HIGHEST QUALITY

PROVEN BY MANY CERTIFICATES



WAY OF PACKAGING

STACKING ANGLES
87x118x156
300-400 - 40 pcs.
500 - 30 pcs.



BAUKRANE DB ECO 20 KN

STEEP PROP IN THE ECONOMIC VERSION

Adjustable steel props with a permissible load bearing capacity 20 kN. These adjustable steel props are designed to transfer vertical compressive loads in temporary slab props and beam slab formwork. It consists of two tubes: the internal one with pegging holes and the external one equipped with a thread, as well as an adjusting nut, a locking pin, and two metal plates creating the upper foot and base foot.

The entire system is hot-dip galvanised, and the nut was powder-coated. This prop has a minimum load bearing capacity of 20 kN, depending on the extension length. (provisions of PN-EN 1065:2001 norm). It can work with the internal tube directed upwards or downwards. It is equipped with an external thread, without a self-cleaning mechanism, allowing smooth adjustment of the prop height. At the lowest position of the prop, the safety space is maintained to protect the fitter's hand from crushing.

DB ECO

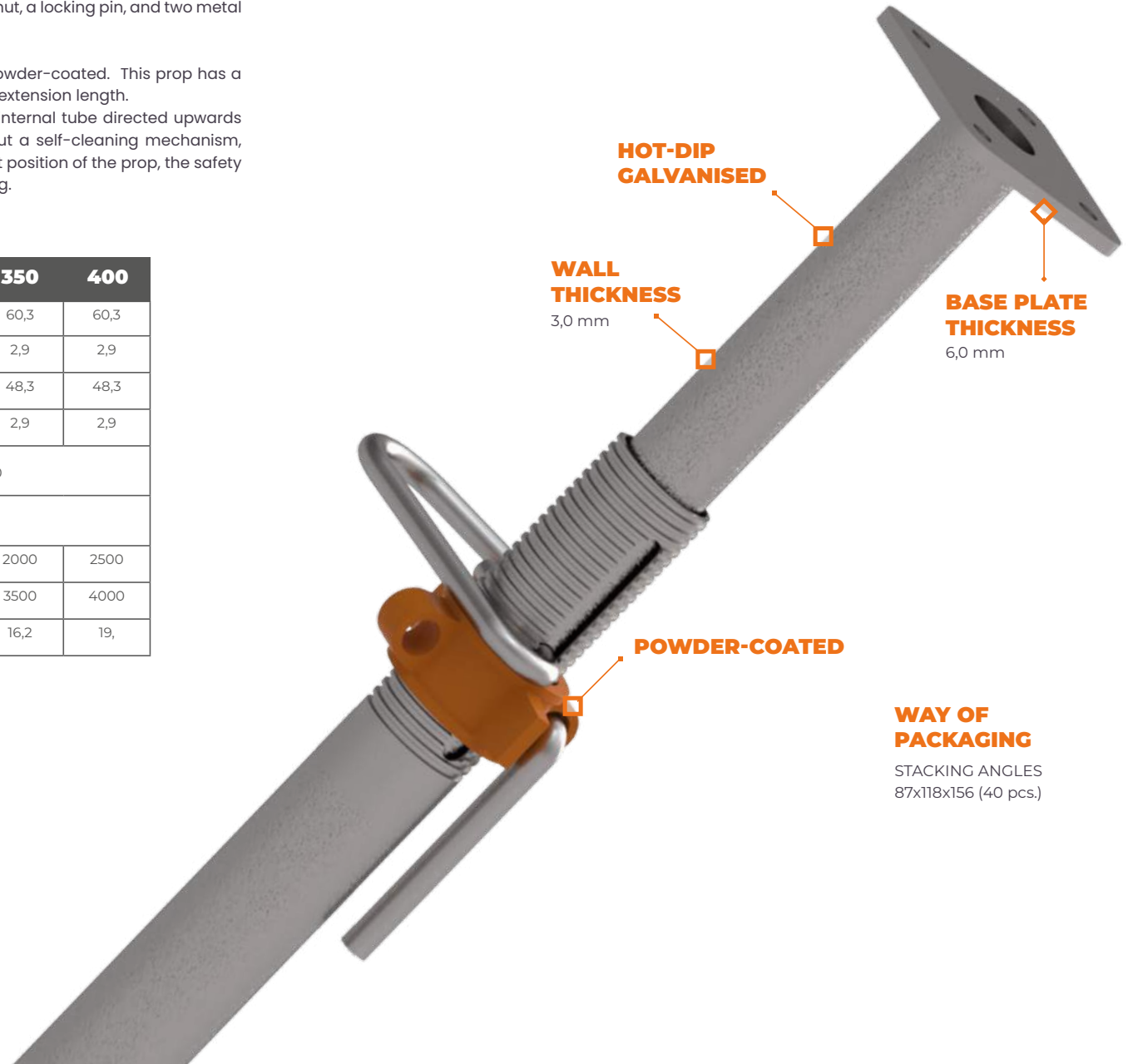
PROP TYPE	250	300	350	400
external tube diameter [mm]	60,3	60,3	60,3	60,3
wall thickness of external tube [mm]	2,9	2,9	2,9	2,9
internal tube diameter [mm]	48,3	48,3	48,3	48,3
wall thickness of internal tube [mm]	2,9	2,9	2,9	2,9
upper and bottom base plate dimensions [mm]	120x120			
base plate thickness base plate dimensions [mm]	6,0			
min. working length [mm]	1500	1700	2000	2500
max. working length [mm]	2500	3000	3500	4000
weight [kg]	12,5	14,5	16,2	19,

Props with a minimum load bearing capacity of 20 kN, depending on the extension length (tested in accordance with the provisions of PN-EN 1065:2001 norm)



OPTIMAL SOLUTION FOR YOUR CONSTRUCTION PROJECT.

VALUE FOR MONEY



WAY OF PACKAGING

STACKING ANGLES
87x118x156 (40 pcs.)

BT 20 BEAM

IN PREMIUM AND ECO VERSIONS

A cost-effective and lightweight BT 20 beam with plastic edge protection and full web. It is distinguished by light weight and rounded ends with protection made from polyurethane.

The BT 20 beam is easy to use and is suitable for variety of applications on any construction site. High quality of flanges thanks to machine sorting and tensile load testing. Easy to use thanks to low weight.

BT 20

Moment (M):	5 kNm
Transverse force (Q):	11 kN
Flange height:	20 cm
Flange dimensions:	height 4 cm, width 8 cm
Rigidity (EJ):	450 kNm ²
Weight:	5 kg/mb



WEIGHT
only 5.0 kg/mb

ROUNDED
edge protection
ends made from
polyurethane

**HIGH
DURABILITY**
rigidity 450 kN/m²

EN 13377
in accordance with the norm

FLANGE HEIGHT
4 cm

FLANGE WIDTH
8 cm

FULL WEB
web made of 3-ply, 29 mm (with edge protection)
web made of hardened plywood (without edge protection)

MADE IN AUSTRIA
FON 1710150GE
EN13377 P20L

Check:




www.baukrane.pl/szalunki/bautreg/

PLASTIK PANEL

GAMECHANGER IN FORMWORK SYSTEMS

Our PLASTIK panel is made from high-quality polypropylene, adapted to international construction standards. This product is characterized by high rigidity, is heat-resistant, corrosion-resistant and has a much higher impact strength. Permissible operating temperature is in the range of -20-90 °C.

height [mm]	2500	2000
width [mm]	1250	500
thickness [mm]	21 / 18	21 / 18
weight [kg]	35,4 / 31,8	11,2 / 10,5

Resistant to damages: 
 Moisture resistant: 
 Surface quality: 

CONTROL ELEMENT		TECHNICAL REQUIREMENT	RESULTS	STUDY METHOD
Shore hardness [D]		STUDY METHOD	61	GB/T 2411-2008
Impact strength measured with Charpy method [kJ/m ²]		≥ 30	66.6 (C)	GB/T 1043.1-2008
Bending strength [MPa]		≥ 30	30.6	GB/T 9341-2008
Flexural modulus [MPa]		≥ 3000	3.08 X 10 ³	GB/T 9341-2008
Change of dimensions [%]	Horizontal	± 0.2	-0.1	JG/T 418-2013 7.2.7
	Vertical	± 0.2	-0.1	JG/T 418-2013 7.2.7
Water absorbability [%]		≤ 0.5	0.2	GB/T 1043.1-2008
Softening point (A ₅₀) [°C]		35,4	148	GB/T 1633-2000

PANEL PLASTIK



VERY HIGH DURABILITY

The panels are tested to achieve **ca. 60-80 cycles of repeated use** when pouring concrete mix.



100% WATERPROOF

Weather conditions do not affect the quality of the product.



NO NO-STICK OIL REQUIRED

The product contains additives that make the panel highly resistant to acidic or alkaline environment. Simple disassembly without any oil.



VERY GOOD MACHINABILITY

Panels are easy to use and compatible with other materials such as timber, steel, aluminium and others.



LOW WEIGHT

Our panels are 20% lighter than traditional plywood, and therefore they are much easier to handle and install. It results in lighter and faster work.



EASY TO REPAIR

Simple renewal of damaged surface with glue. Possible to conduct on-site.



COST-EFFECTIVE

Using a single set can save up to 60% of the total budget than when using standard plywood or metal formwork.

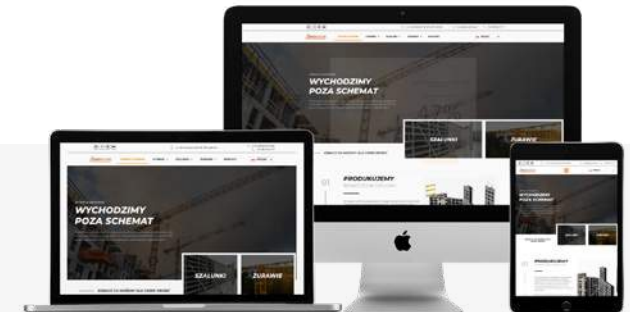


COMPLETE RECYCLING

Panels made of polypropylene are fully recyclable. This decomposition is environmentally friendly, creating no waste and no hazardous gases.

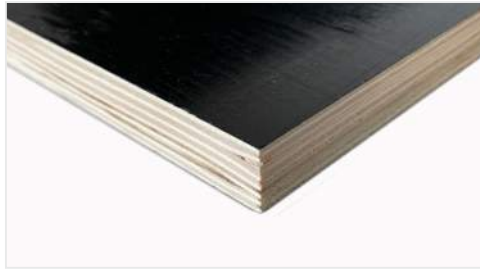
CHECK OUT
OUR FULL OFFER

www.baukrane.pl



SHUTTERING SKIN

IN STANDARD, PREMIUM AND ECO VERSIONS



POPLAR PLYWOOD ECO
2500 × 1250 × 21 [mm]

- most cost-effective version of plywood
- phenolic coating
- core is recycled, top layers are new
- smooth surface after stripping

Resistant to damages:

Moisture resistant:

Surface quality:

Number of use: **1-3**

STANDARD POPLAR PLYWOOD
2500 × 1250 × 21 [mm]

- improved version of ECO plywood
- phenolic coating
- made entirely from new poplar veneer
- smooth surface after stripping

Resistant to damages:

Moisture resistant:

Surface quality:

Number of use: **3-6**

**3-PLY PLYWOOD
EDGE PROTECTION TYPE „E”**
2500 × 500 × 21 [mm] / 2000 × 500 × 21 [mm]
1500 × 500 × 21 [mm]

- plywood protected by E-shaped sheet profile, provides high resistance to mechanical damages
- smooth, impregnated surface
- high rigidity

Resistant to damages:

Moisture resistant:

Surface quality:

Number of use: **30-40**

**3-PLY PLYWOOD
WITHOUT EDGE PROTECTION**
2500 × 500 × 21 [mm] / 2000 × 500 × 21 [mm]
1500 × 500 × 21 [mm]

- smooth surface protected by special impregnating paint against
- detrimental effects of water as per EN13353(SWP/3),
- high rigidity, for multiple use

Resistant to damages:

Moisture resistant:

Surface quality:

Number of use: **30-40**



BIRCH PLYWOOD
2500 × 1250 × 21 [mm]

- first class product
- eco-friendly, reusable
- most durable timber plywood available
- smooth surface after stripping

Resistant to damages:

Moisture resistant:

Surface quality:

Number of use: **30-40**

PANEL 3-S PREMIUM
3000 × 500 × 21/27 [mm] / 2500 × 500 × 21/27 [mm]
2000 × 500 × 21/27 [mm] / 1500 × 500 × 21/27 [mm]

- made of 3 layers of solid impregnated spruce wood, available thickness: 21 / 27 mm
- coated with varnish for greater durability
- produced in accordance with Austrian standard B3023
- wood structure visible after stripping

Resistant to damages:

Moisture resistant:

Surface quality:

Number of use: **30-40**



Our technical advisors are always on hand
- to provide you with the ideal shuttering skin.



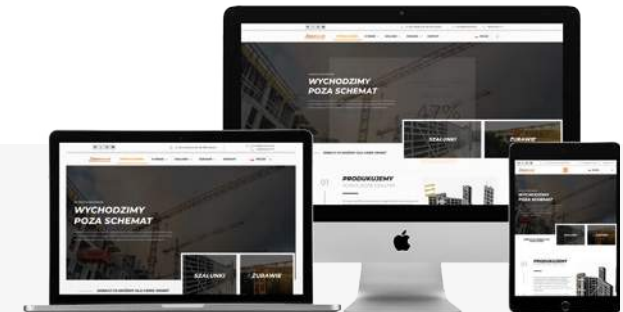
+48 794 910 849



sales@baukrane.pl

CHECK OUT
OUR FULL OFFER

www.baukrane.pl



EXPORT

WORLDWIDE

Michał Toboła

+48 794 910 849

michal.tobola@baukrane.pl

Kamil Tryniszewski

+48 786 101 726

kamil.tryniszewski@baukrane.pl

**CZECH, SLOVAKIA,
HUNGARY, ROMANIA**

Lucie Žukowska Piłka

+420 704 933 114

lucie.zukowska@baukrane.pl

POLAND

Natalia Trowska

+48 570 555 576

natalia.trowska@baukrane.pl

Paweł Fidurski

+48 786 100 567

pawel.fidurski@baukrane.pl

Mateusz Knodel

+48 570 555 575

mateusz.knodel@baukrane.pl

Piotr Spyra

+48 570 555 579

piotr.spyra@baukrane.pl

Gdańsk

ul. Jana Keplera 36,
80-299 Gdańsk
+48 58 345 11 77
gdansk@baukrane.pl

Wrocław

ul. Wrocławska 39,
55-095 Byków
+48 786 100 397
wroclaw@baukrane.pl

Warszawa

Koszajec 12,
05-840 Brwinów
+48 537 279 408
warszawa@baukrane.pl

Kraków

ul. Majdzika 18,
32-050 Skawina
+48 790 614 000
krakow@baukrane.pl

www.BAUKRANE.pl

