

# FORMWORK SYSTEMS & ACCESSORIES

CATALOGUE **2026**



# Table of contents

A FEW WORDS ABOUT US	6
PROPRIETARY FORMWORK SYSTEMS	8
LOGISTICS	10
<b>WALL FORMWORK</b>	
BAUTEKK	14
BAUFRAME	24
BAUSCHAL	36
WINDOW SHAFT CORNER	46
<b>SLAB SOLUTIONS</b>	
BAUDECK	50
BAUPROP 20	58
EASYPROP 20	62
ECOPROP	66
BAUKRANE ECO 20	70
PAINTED PROP	72
GALVANIZED LIGHT PROP	74
TRIPODS, HEADS	76
BEAMS	78
PLYWOOD	82
<b>P70 SCAFFOLDING</b>	86
ACCESSORIES	92

# Product diversity in every category

We know that formwork is just one of many essential elements on a construction site. In addition to our proprietary wall and slab formwork systems, we supply complete equipment for the formwork process – props, compatible accessories, lost formwork elements, plywood, scaffolding, and, if required, also used equipment.

Everything you need for formwork – from one supplier, with fast delivery times.



**WALL  
FORMWORK**



**SLAB  
FORMWORK**



**PROPS**



**PLYWOOD  
AND THREE-LAYER  
BOARDS**



**SCAFFOLDING**



**H&S SYSTEMS**



**BEAMS**



**LOST  
FORMWORK  
ELEMENTS**



**FORMWORK  
ACCESSORIES**



# Formwork hub.

## Everything for your construction site.

We supply a full range of products required for formwork – from formwork systems to props, plywood, beams, accessories, and scaffolding. We have developed our own line of wall and slab formwork systems, as well as props and scaffolding, with reliability and compatibility in mind.

Thanks to our in-house production, we ensure flexibility in deliveries and equipment availability in any required quantity. Additionally, we operate a fleet of over 100 tower cranes, enabling comprehensive support for construction projects.

We support every client in the execution of construction projects – from small and medium contractors to general contractors, developers, as well as distributors and formwork rental companies.



# Proprietary formwork systems

By supplying equipment to construction sites and exchanging experience with contractors and site crews, we observed recurring challenges related to **equipment diversity, system completeness, and – above all – lack of compatibility between systems.**

In response, we developed our own wall and slab formwork systems that **eliminate the need to use strictly dedicated accessories for a single system.**

Guided by the principle **“functionality above all”**, our formwork systems can be freely combined with one another as well as with popular systems from other manufacturers.

Accessories and fittings are universal, allowing you to connect medium-duty systems with heavy-duty systems using the **same clamps, props, and accessories.**

**The result?** Fewer stock items to manage, lower costs, shorter purchasing processes, less equipment on site, and faster deliveries.





VISIT OUR PRODUCTION  
FACILITIES

▶ **FILM**



## 3 logistics centers worldwide shipping

You can have the best equipment in the world – but it means nothing if it doesn't arrive on time. We have integrated technical advisors, logistics, and warehousing into a single process to streamline communication, reduce picking times, and speed up loading operations.

We operate logistics centers in the three largest cities in Poland: Gdańsk, Kraków, and Warsaw, as well as a sales office in Wrocław. We deliver directly to headquarters, branches, and construction sites. We have also implemented a fast-track shipping system for small-volume items, allowing you to replenish missing components on site as quickly as possible.

All of this is done for one purpose: to keep your construction site running without downtime.





**GDAŃSK**



**KRAKÓW**



**WARSZAWA**



**WROCLAW - BIURO HANDLOWE**



# **WALL FORMWORK**



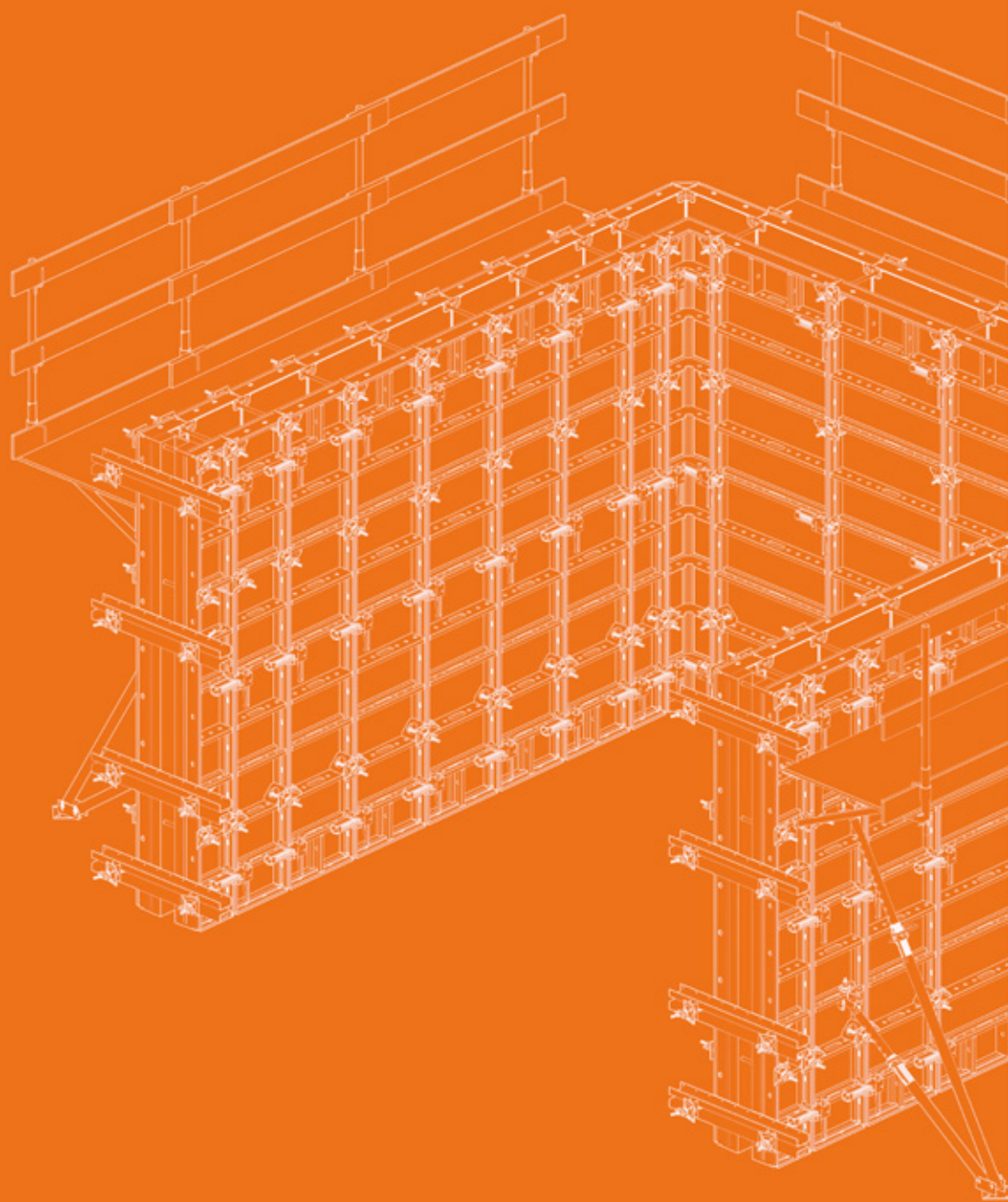
**FOR VOLUMETRIC AND  
INDUSTRIAL PROJECTS**



**COMPATIBLE WITH OTHER  
WALL FORMWORK SYSTEMS**



**UNIVERSAL ACCESSORIES  
AND FITTINGS**



# BAUTEKK

LIGHTWEIGHT FORMWORK SYSTEM  
FOR FOUNDATIONS AND WALLS



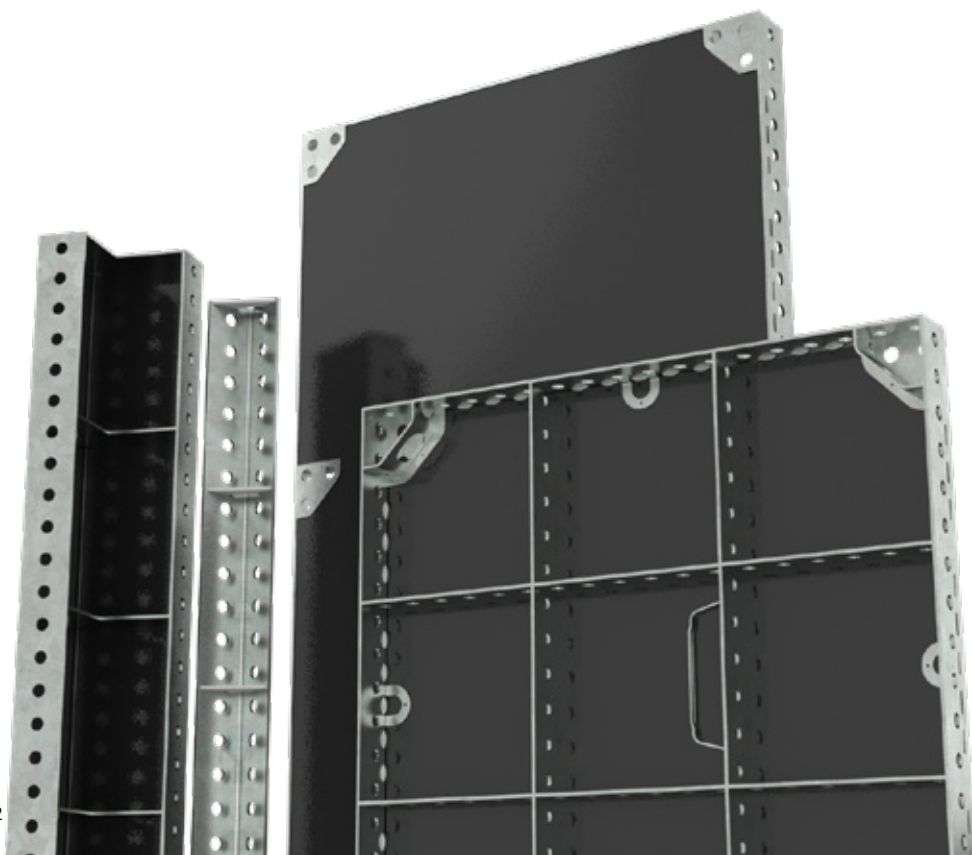
Load capacity 50 kN/m<sup>2</sup>



Full hot-dip galvanizing



Compatible with Tekko



## Technical data

<b>inner corner:</b>	15x15 / 20x20 cm
<b>hinged corner:</b>	8 x 8 cm
<b>frame:</b>	8 cm thick steel profile, fully hot-dip galvanized, high-quality steel
<b>shuttering skin:</b>	birch plywood 12 mm
<b>average weight:</b>	45 kg / m <sup>2</sup>
<b>max. fresh concrete pressure:</b>	50 kN / m <sup>2</sup>
<b>compatibility:</b>	Tekko, Pionbox, Budouni, Minibox
<b>standard connectors:</b>	Bautekk clamp
<b>assembly time:</b>	0,3 – 0,5 h / m <sup>2</sup>

## Panel dimensions:

**Height: 90 cm**  
**Widths:** 10 · 20 · 25 · 30 · 45 · 50 · 60 · 70 · 75 · 90  
**VZ:** 60 · 70 · 90

**Height: 120 cm**  
**Widths:** 10 · 25 · 30 · 45 · 50 · 60 · 70 · 90  
**VZ:** 70 · 90

**Height: 150 cm**  
**Widths:** 10 · 20 · 25 · 30 · 45 · 50 · 60 · 70 · 75 · 90  
**VZ:** 70 · 90



## Ideal for:

- strip foundations and foundation walls
- ground beams and fence beams
- pad foundations
- chambers, manholes, tanks
- beams and slab ribs
- ring beams
- reinforced concrete columns and cores

# What makes **BAUTEKK** stand out?



## Protection plates

They protect the plywood from impacts caused by tie rods when pulling them through to the opposite panel. This significantly extends the service life of the plywood and increases the working life of the formwork on site.



## 3 through-holes

Three through-holes for tie rods allow you to connect formwork panels exactly where and how you need – even directly at the foundation level.



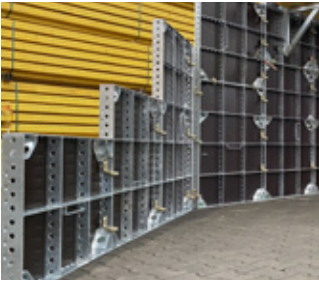
## Easy transport and assembly

No heavy or specialized equipment is required for transport or assembly. A single panel can be carried by two people, and simple Bautekk connectors are sufficient for joining panels. Easy assembly and stripping mean faster completion of concreting works.



### **Compatible with Tekko**

Bautekk panels can be combined with any other Tekko-type formwork. Use your existing formwork and supplement it with new Bautekk panels.



### **Formwork adapted to your project**

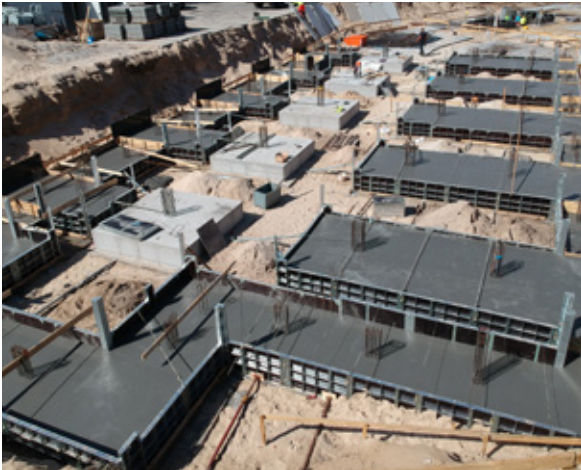
Multi-hole panels allow you to create formwork assemblies of various shapes and dimensions. The articulated corner enables forming walls at different angles. You can easily adapt the formwork to different projects. Multi-hole VZ panel variants are also available.



### **12 mm birch plywood**

High-quality plywood means longer formwork lifespan. We use only birch plywood, which is durable and resistant to moisture.

# Project photos



## A few words about the system



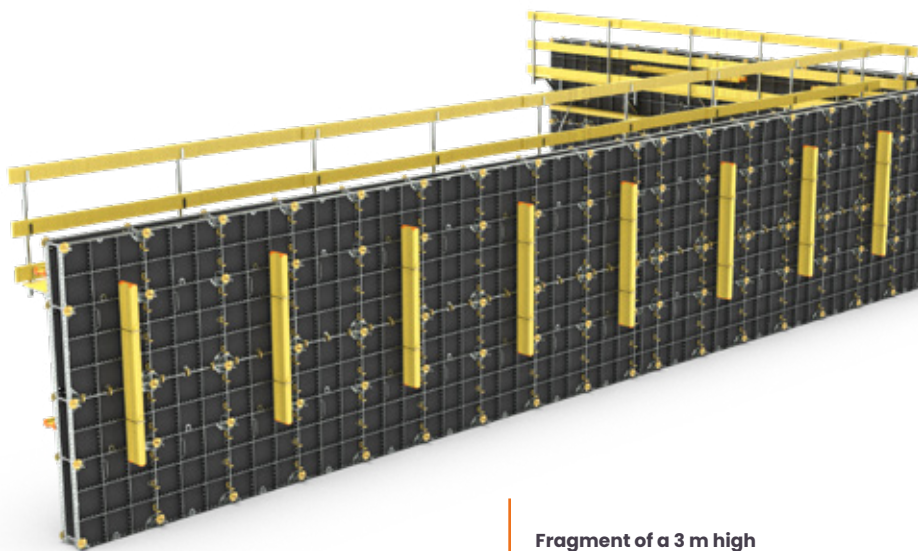
**WITH OUR  
PANELS YOU  
CAN COST-  
EFFECTIVELY  
BUILD ANY  
FORMWORK UP  
TO 3 m IN HEIGHT**

*Our proprietary lightweight BAUTEKK formwork system is designed to meet the needs of small and medium-sized companies specializing in reinforced concrete works. Are you building single-family houses? A retaining wall? Or do you need a simple way to cast columns? With our panels, you can economically build any formwork up to 3 m in height, assemble it manually without using a crane, and significantly reduce the time required for preparatory works before placing concrete. The panels are designed for both vertical and horizontal installation, while high-quality birch plywood and a welded frame with mitered joints allow the system to be used reliably for many years.*

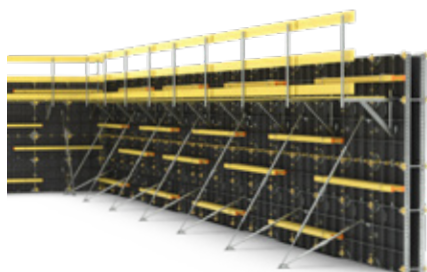
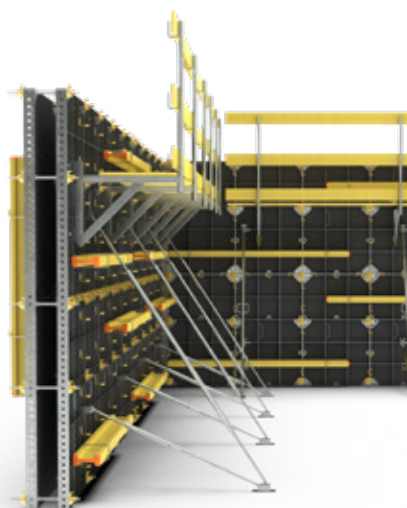
**Paweł Fidurski**  
Sales Area Director



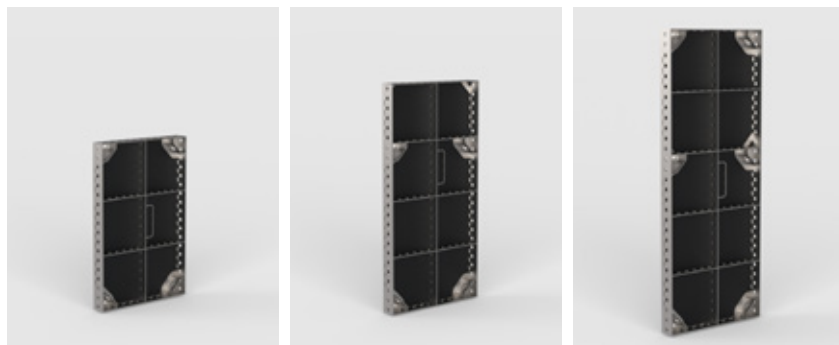
# Example assembly



Fragment of a 3 m high  
Bautekk wall



# BAUTEKK panels



INDEX	NAME	WEIGHT (kg)
72100S1090	BAUTEKK PANEL 10x90	6,96
72100S2090	BAUTEKK PANEL 20x90	8,89
72100S2590	BAUTEKK PANEL 25x90	11,3
72100S3090	BAUTEKK PANEL 30x90	14,49
72100S4590	BAUTEKK PANEL 45x90	17,68
72100S5090	BAUTEKK PANEL 50x90	18,77
72100S6090	BAUTEKK PANEL 60x90	20,52
72100S7590	BAUTEKK PANEL 75x90	25,22
72100S9090	BAUTEKK PANEL 90x90	27,84
72210S6090	BAUTEKK PANEL 60x90 VT	24,68
72210S7090	BAUTEKK PANEL 70x90 VT	29,48
72210S9090	BAUTEKK PANEL 90x90 VT	35,33
7210S10120	BAUTEKK PANEL 10x120	9,07
7210S25120	BAUTEKK PANEL 25x120	14,87
7210S30120	BAUTEKK PANEL 30x120	16,2
7210S45120	BAUTEKK PANEL 45x120	22,32
7210S50120	BAUTEKK PANEL 50x120	23,65
7210S60120	BAUTEKK PANEL 60x120	25,83
7210S90120	BAUTEKK PANEL 90x120	35,33
7221S70120	BAUTEKK PANEL 70x120 VT	36,42
7221S90120	BAUTEKK PANEL 90x120 VT	43,31
7210S10150	BAUTEKK PANEL 10x150	11,2
7210S20150	BAUTEKK PANEL 20x150	14,08
7210S25150	BAUTEKK PANEL 25x150	19,34
7210S30150	BAUTEKK PANEL 30x150	20,69
7210S45150	BAUTEKK PANEL 45x150	28,43
7210S50150	BAUTEKK PANEL 50x150	29,78
7210S60150	BAUTEKK PANEL 60x150	32,49

INDEX	NAME	WEIGHT (kg)
7210S75150	BAUTEKK PANEL 75x150	40,02
7210S90150	BAUTEKK PANEL 90x150	44,07
7221S70150	BAUTEKK PANEL 70x150 VT	45,23
7221S90150	BAUTEKK PANEL 90x150 VT	53,83

## Corners



INDEX	NAME	WEIGHT (kg)
72100B1560	INNER CORNER BAUTEKK 15x15x60	11,2
72100B1590	INNER CORNER BAUTEKK 15x15x90	19,34
7210B15120	INNER CORNER BAUTEKK 15x15x120	21
7210B15150	INNER CORNER BAUTEKK 15x15x150	25
7210B20150	INNER CORNER BAUTEKK 20x20x150	28
721300B060	OUTER CORNER BAUTEKK 0x60	5
721300B090	OUTER CORNER BAUTEKK 0x90	6
72130B0120	OUTER CORNER BAUTEKK 0x120	8
72130B0150	OUTER CORNER BAUTEKK 0x150	10
721400B120	ADAPTOR ANGLE 120	5,3
721400B150	ADAPTOR ANGLE 150	7
721400B890	HINGED CORNER BAUTEKK 8x8x90	12,6
72140B8120	HINGED CORNER BAUDEKK 8x8x120	16,9
72140B8150	HINGED CORNER BAUDEKK 8x8x150	20,4
721400B120	ADAPTOR ANGLE 120	5,3
721400B150	ADAPTOR ANGLE 150	7

CORNERS



Our technical advisors are at your disposal

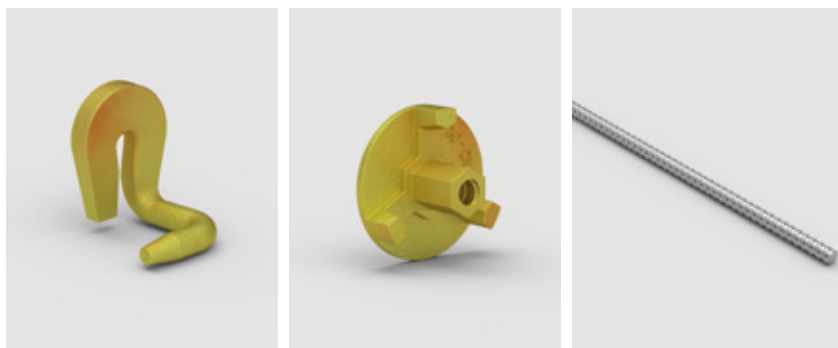


+48 570 555 579



sklep@baukrane.pl

# Accessories



ACCESSORIES

INDEX	NAME	WEIGHT (kg)
7270B00001	BAUTEKK CLAMP	0,6
7000000018	BAUTEKK PLUG	0,01
727B100180	SUPPORT STRUT BAUTEKK 1,0-1,8	7,95
727B160300	SUPPORT STRUT BAUTEKK 1,6-3,0	10,35
727B200360	SUPPORT STRUT BAUTEKK 2,0-3,6	11,75
72700B0000	BAUTEKK TRANSPORT HOOK	5,46
7270B00003	BOLT BAUTEKK	0,12
72700B0021	CORNER SPANNER BAUTEKK	0,4
74000000B5	RAILING POST BAUTEKK	3,7
74000000B8	RAILING POST BRACKET BAUTEKK	7,4
7270B00004	TENSION BOLT BAUTEKK Ø15MM	1,5
7270B00002	WEDGE BAUTEKK 0,15	0,15
74000B0013	BAUTEKK BEAM CLAMP	0,25

CHECK THE  
FULL OFFER

[www.baukrane.pl](http://www.baukrane.pl)



# BAUFRAME

UNIVERSAL WALL FORMWORK  
FOR REINFORCED CONCRETE PROJECTS



Load capacity 60 kN/m<sup>2</sup>



Full hot-dip galvanizing



Compatible with Rasto



## Technical data

<b>inner corner:</b>	30x30 cm
<b>hinged corner:</b>	15 x 15 cm / 30 x 30 cm
<b>frame:</b>	range of angles from 60° to 150°, 12 cm thick steel profile, fully hot-dip galvanized
<b>shuttering skin:</b>	high-quality 15 mm birch plywood
<b>average weight:</b>	33,74 kg / m <sup>2</sup>
<b>maximum fresh concrete pressure:</b>	60 kN / m <sup>2</sup>
<b>compatibility:</b>	Bauframe-Alu, Bauschal, Rasto, MidiBox, RHINO
<b>standard connectors:</b>	Baukrane wedge clamps
<b>assembly time:</b>	0,3 - 0,5 h / m <sup>2</sup>

## Panel dimensions:

### BAUFRAME:

**height: 90 cm**

**weight:** 25 · 30 · 45 · 50 · 55 · 60 · 65 · 75 · 90

**VZ:** 70 · 90

**height: 270 cm**

**weight:** 25 · 30 · 45 · 50 · 55 · 60 · 65 · 75 · 90 · 120 · 180 · 240

**VZ:** 70 · 90

**height: 300 cm**

**weight:** 25 · 30 · 45 · 50 · 55 · 60 · 65 · 75 · 90 · 120 · 180 · 240

**VZ:** 70 · 90

### BAUFRAME ALU:

**height: 300 cm**

**weight:** 25 · 30 · 45 · 50 · 55 · 60 · 65 · 75 · 90 · 120 · 180 · 240

**VZ:** 70 · 90

**height: 150 cm**

**weight:** 25 · 30 · 45 · 50 · 55 · 60 · 65 · 75 · 90

**VZ:** 70 · 90



## Ideal for:

- reinforced concrete walls in residential and industrial construction
- vertical partitions in civil engineering structures
- reinforced concrete columns and cores
- massive foundations and pad foundations

# What makes **BAUFRAME** stand out?



## **Steel shoes protecting the plywood**

Specially designed steel shoes directly protect the plywood from impacts caused by tie rods.



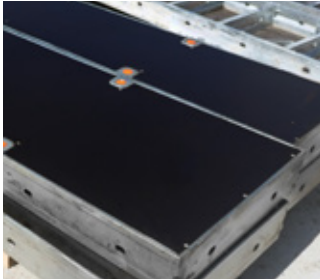
## **Reinforced corners**

They further protect the formwork profile, increasing resistance to concrete pressure. Maximum load capacity reaches 60 kN/m<sup>2</sup>.



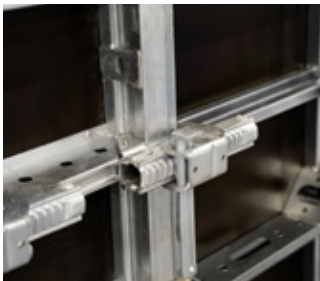
## **Additional frame-reinforcing profiles**

Additional inserts at both ends of the panels further increase frame strength. They provide extra protection when transporting complete formwork sets without dismantling, or during stripping using a crane or hoist.



### **15 mm birch plywood with 220 g/m<sup>2</sup> phenolic film**

Good plywood means fewer replacements and longer service life on site. We use durable, moisture-resistant birch plywood with additional edge protection against water penetration.



### **Universal accessories**

The system can be secured using universal Baukrane accessories or other accessories compatible with Rasto. Fewer dedicated components mean fewer issues on site and easier equipment completion.



### **Compatible with Rasto and Bauschal**

Bauframe can be combined with Bauframe ALU, the heavy-duty Bauschal system, and other Rasto-profile systems. You work with equipment you already know, reducing assembly errors and making projects faster and more cost-efficient.

# Available Bauframe variants



## Bauframe VZ

Bauframe VZ multi-hole panels are ideal for forming columns with various cross-sections. Steel multi-hole profiles spaced every 5 cm allow right-hand connections, creating a rigid and durable rectangular column structure. With the VZ corner accessory, a VZ panel can be connected to a standard panel, e.g. when forming rectangular corners.



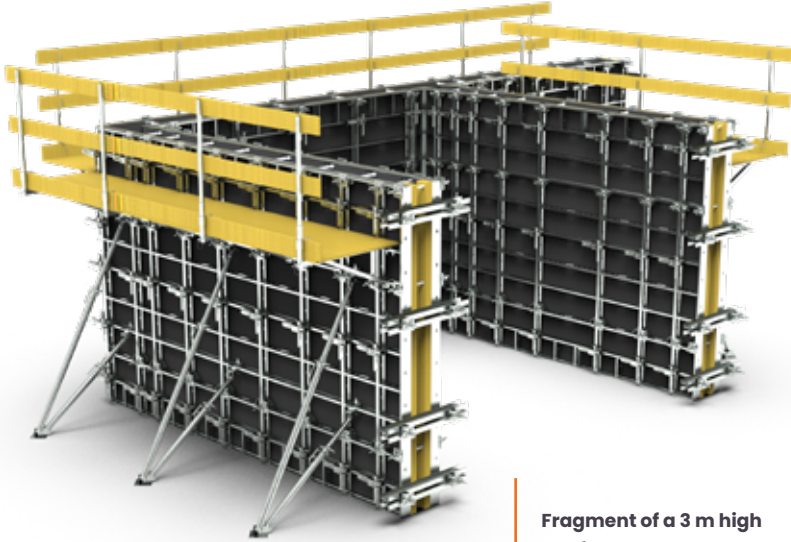
## Bauframe ALU

Bauframe Alu panels are made of rigid, hardened aluminum profiles, with the outer profile height of 121 mm and width of 20 mm. The aluminum frame is fully compatible with its steel counterpart and can be used interchangeably.

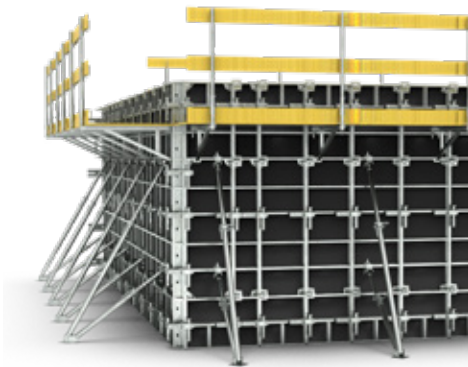
The facing consists of high-quality 15 mm birch plywood coated with a 220 g/m<sup>2</sup> phenolic film, with edges protected by a formed profile.

The low weight allows a single panel to be carried without heavy equipment. Ideal for hard-to-access areas.

# Example assembly



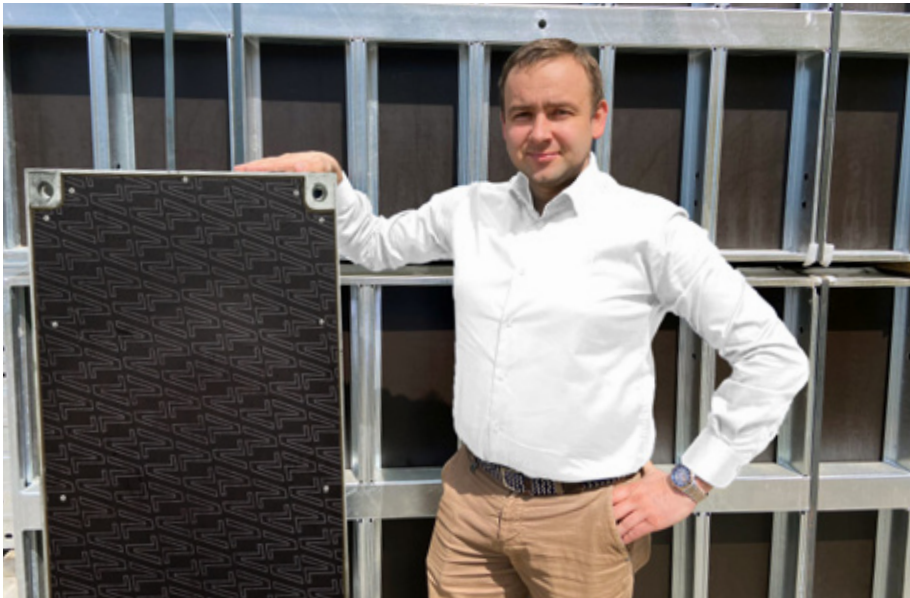
Fragment of a 3 m high  
Bauframe wall



# Project photos



## A few words about the system



### **AN EXCELLENT SOLUTION FOR SMALL AND MEDIUM-SIZED PROJECTS**

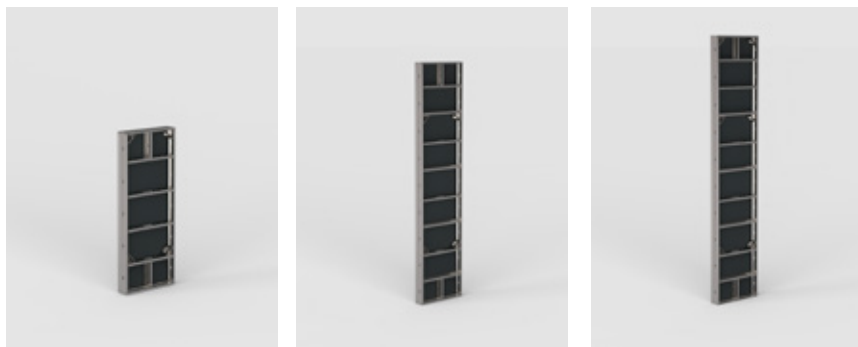
*BAUFRAME is a highly practical and proven formwork system, tested on thousands of construction sites. In most cases, it can be used independently of crane availability. The key component of the system is the wedge clamp, which significantly speeds up assembly. A wide range of panel sizes allows adaptation to most reinforced concrete geometries, while the hot-dip galvanized frame combined with high-quality facing ensures long-term use. BAUFRAME is an ideal solution for small and medium-sized construction sites, particularly in residential and office building projects.*

**Krzysztof Mateńczuk**

*Director of Formwork and Crane Rental Department  
Member of the Management Board*



# Bauframe panels



INDEX	NAME	WEIGHT (kg)
7241240300	BAUFRAME Panel 240x300	344,85
7241180300	BAUFRAME Panel 180x300	275,23
7241120300	BAUFRAME Panel 120x300	175,69
7241190300	BAUFRAME Panel 90x300 VZ	140,48
7241090300	BAUFRAME Panel 90x300	90,45
7241075300	BAUFRAME Panel 75x300	80,1
7241070300	BAUFRAME Panel 70x300 VZ	113,4
7241065300	BAUFRAME Panel 65x300	73,42
7241060300	BAUFRAME Panel 60x300	70
7241055300	BAUFRAME Panel 55x300	66,74
7241050300	BAUFRAME Panel 50x300	63,32
7241045300	BAUFRAME Panel 45x300	57,45
7241030300	BAUFRAME Panel 30x300	49,32
7241025300	BAUFRAME Panel 25x300	45,9
7241240270	BAUFRAME Panel 240x270	302,58
7241180270	BAUFRAME Panel 180x270	248,52
7241120270	BAUFRAME Panel 120x270	157,05
7241190270	BAUFRAME Panel 90x270 VZ	124,34
7241090270	BAUFRAME Panel 90x270	82,11
7241075270	BAUFRAME Panel 75x270	71,59
7241070270	BAUFRAME Panel 70x270 VZ	100,05
7241065270	BAUFRAME Panel 65x270	65,52
7241060270	BAUFRAME Panel 60x270	62,41
7241055270	BAUFRAME Panel 55x270	59,43
7241050270	BAUFRAME Panel 50x270	56,34
7241045270	BAUFRAME Panel 45x270	51,88

INDEX	NAME	WEIGHT (kg)
7241030270	BAUFRAME Panel 30x270	43,47
7241025270	BAUFRAME Panel 25x270	40,38
7241190150	BAUFRAME Panel 90x150 VZ	71,96
7241090150	BAUFRAME Panel 90x150	50,67
7241075150	BAUFRAME Panel 75x150	43,82
7241070150	BAUFRAME Panel 70x150 VZ	57,72
7241065150	BAUFRAME Panel 65x150	40,18
7241060150	BAUFRAME Panel 60x150	38,34
7241055150	BAUFRAME Panel 55x150	36,54
7241050150	BAUFRAME Panel 50x150	34,69
7241045150	BAUFRAME Panel 45x150	31,5
7241030150	BAUFRAME Panel 30x150	26,4
7241025150	BAUFRAME Panel 25x150	24,55
7241190090	BAUFRAME Panel 90x90 VZ	51,68
7241009090	BAUFRAME Panel 90x90	35,05
7241007590	BAUFRAME Panel 75x90	29,97
7241070090	BAUFRAME Panel 70x90 VZ	40,46
7241006590	BAUFRAME Panel 65x90	27,49
7241006090	BAUFRAME Panel 60x90	26,27
7241005590	BAUFRAME Panel 55x90	25,07
7241005090	BAUFRAME Panel 50x90	23,85
7241004590	BAUFRAME Panel 45x90	21,13
7241003090	BAUFRAME Panel 30x90	17,71
7241002590	BAUFRAME Panel 25x90	16,48

INDEX	NAME	WEIGHT (kg)
7242090300	BAUFRAME-ALU Panel 90x300	62,69
7242085300	BAUFRAME-ALU Panel 85x300	59,88
7242080300	BAUFRAME-ALU Panel 80x300	57,06
7242075300	BAUFRAME-ALU Panel 75x300	54,24
7242170300	BAUFRAME-ALU Panel 70x300 VZ	75,38
7242070300	BAUFRAME-ALU Panel 70x300	50,92
7242065300	BAUFRAME-ALU Panel 65x300	48,36
7242060300	BAUFRAME-ALU Panel 60x300	45,8
7242055300	BAUFRAME-ALU Panel 55x300	43,31
7242050300	BAUFRAME-ALU Panel 50x300	40,75
7242045300	BAUFRAME-ALU Panel 45x300	38,19
7242040300	BAUFRAME-ALU Panel 40x300	35,73
7242035300	BAUFRAME-ALU Panel 35x300	33,27
7242030300	BAUFRAME-ALU Panel 30x300	30,81
7242025300	BAUFRAME-ALU Panel 25x300	28,63

# Corners



INDEX	NAME	WEIGHT (kg)
7241400300	OUTER CORNER BAUFRAME 0x300	31,1
7241400270	OUTER CORNER BAUFRAME 0x270	28,02
7241400150	OUTER CORNER BAUFRAME 0x150	15,68
7241400090	OUTER CORNER BAUFRAME 0x90	9,52
7241330300	INNER CORNER BAUFRAME 30x30x300	81,2
7241330270	INNER CORNER BAUFRAME 30x30x270	72,2
7241330150	INNER CORNER BAUFRAME 30x30x150	42,46
7241330090	INNER CORNER BAUFRAME 30x30x90	27,58
7242230300	INNER CORNER BAUFRAME ALU 30x30x300	44,74
7242230270	INNER CORNER BAUFRAME ALU 30x30x270	40,26
7242230150	INNER CORNER BAUFRAME ALU 30x30x150	28
7241515300	HINGED CORNER BAUFRAME 15x15x300	74,8
7241515270	HINGED CORNER BAUFRAME 15x15x270	67,36
7241515150	HINGED CORNER BAUFRAME 15x15x150	37,62
7241515090	HINGED CORNER BAUFRAME 15x15x90	22,8
7241530300	HINGED CORNER BAUFRAME 30x30x300	92,42
7241530270	HINGED CORNER BAUFRAME 30x30x270	82,35
7241530150	HINGED CORNER BAUFRAME 30x30x150	47,83
7241530090	HINGED CORNER BAUFRAME 30x30x90	30,58

CORNERS

# Accessories

INDEX	NAME	WEIGHT (kg)
7100004075	BAUKRANE SUPPORT TRESTLE	245
7100004076	BAUKRANE SUPPORT TRESTLE RESISTANCE	61
7100004077	STRESS BEAM FOR SUPPORT TRESTLE	57
7270005300	SUPPLEMENTARY INSERT 5X300	21,45
7270005270	SUPPLEMENTARY INSERT 5X270	18,92
7270005150	SUPPLEMENTARY INSERT 5X150	11,66
7271000002	BAUKRANE WEDGE LOCK	4,2

INDEX	NAME	WEIGHT (kg)
7271000003	BAUKRANE UNI WEDGE LOCK	5,5
7271000090	CORNER LOCK	6,5
7270000120	CENTERING PIN 120	0,79
7270015200	CENTERING PIN 200	0,9
7270000030	BOLT TENSIONER 30	0,71
7270000050	BOLT TENSIONER 50	1,02
7270000002	PIN VZ	0,6
727100R001	NUT VZ	0,4
7271100001	VZ CORNER BRACKET	0,93
7270000007	EDGE HOOK	1,46
7270015075	DW-15 TIE ROOD 75 CM	1,12
7270015100	DW-15 TIE ROOD 100 CM	1,5
7270015150	DW-15 TIE ROOD 150 CM	2,25
7270015200	DW-15 TIE ROOD 200 CM	3
7270015250	DW-15 TIE ROOD 250 CM	3,75
7270015300	DW-15 TIE ROOD 300 CM	4,5
7000000070	NUT Ø70	0,46
7000000100	NUT Ø100	0,64
7000120120	113X113 SQUARE ARTICULATED NUT	1,3
7000120000	Ø120 FORGED ARTICULATED NUT	2
7460000058	CENTERING NUT	0,67
7270010650	HEX NUT 50MM	0,21
7500000443	HEX NUT 105MM	0,45
7270200100	STIFFENING BOLT 100	15
7270100080	ALIGNMENT BAR 80	10,6
7270100120	ALIGNMENT BAR 120	15,62
7270100150	ALIGNMENT BAR 150	20,64
7270100200	ALIGNMENT BAR 200	25,66
7270100260	ALIGNMENT BAR 260	31,77
7271000300	PUSH-PULL PROP HEAD	1,96
7272000000	PUSH-PULL PROP BASE PLATE	2,8
7271080130	PUSH-PULL PROP 0,9-1,3	8,2
7271050230	PUSH-PULL PROP 1,6-2,4	12,6
7271280470	PUSH-PULL PROP 2,8-4,7	20,6
72700000B1	TILTING PROP B1	24,54
72700000B2	TILTING PROP B2	26,15
7271000000	BAUFRAME TRANSPORT HANDLE	8,06
72700000BB	BAUKRANE TRANSPORT HANDLE	8,5
7270000900	MESH CONTAINER	76
7000000025	BAUKRANE PLUG	0,01
7000000022	PLASTIC PLUG D22	0,01

# BAUSCHAL

HEAVY-DUTY WALL FORMWORK  
FOR DEMANDING BUILDING AND INDUSTRIAL PROJECTS



Load capacity 80 kN/m<sup>2</sup>



Full hot-dip galvanizing



Compatible with Rasto



## Technical data

<b>inner corner:</b>	30x30 cm
<b>frame:</b>	12 cm thick steel profile, fully hot-dip galvanized
<b>shuttering skin:</b>	high-quality 21mm birch plywood
<b>average weight:</b>	55,80 kg / m <sup>2</sup>
<b>maximum fresh concrete pressure:</b>	80 kN / m <sup>2</sup>
<b>compatibility:</b>	Bauframe-Alu, Rasto, MidiBox, RHINO
<b>standard connectors:</b>	Baukrane wedge clamps
<b>assembly time:</b>	0,3 - 0,5 h / m <sup>2</sup>

## Panel dimensions:

<b>height: 150 cm</b>
<b>width:</b> 30 · 45 · 60 · 75 · 90 · 100 · 120 · 240
<b>VZ:</b> 90
<b>height: 270 cm</b>
<b>width:</b> 30 · 45 · 60 · 75 · 90 · 100 · 120 · 240
<b>VZ:</b> 90
<b>height: 300 cm</b>
<b>width:</b> 30 · 45 · 50 · 55 · 60 · 75 · 90 · 100 · 120 · 240
<b>VZ:</b> 90



## Ideal for:

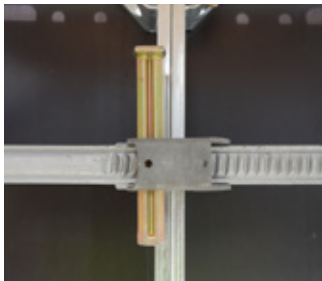
- reinforced concrete walls in residential and industrial construction
- vertical partitions in civil engineering projects
- reinforced concrete columns and cores
- massive foundations and footing bases

# What makes **BAUSCHAL** stand out from other formwork systems?



## **Tie-rod openings integrated in panel profiles**

Steel panels are equipped with through tie-rod openings integrated into 60×50 mm steel profiles with a thickness of 17 mm. This solution protects the shuttering skin from damage caused by tie rods during both assembly and disassembly.



## **Universal accessories**

The system can be secured using universal Baukrane accessories or other Rasto-compatible components. Fewer dedicated accessories mean fewer problems on site and easier equipment management.



## **21 mm birch plywood with 220 g/m<sup>2</sup> phenolic film**

Durable, moisture-resistant birch plywood ensures a longer service life of the formwork. Additional edge protection prevents water penetration.



### **Reinforced frame and internal profiles**

The frame and internal profiles are made of high-grade steel and additionally reinforced to withstand the highest loads. The entire structure is protected by hot-dip galvanizing to maximize durability.



### **Load capacity 80 kN/m<sup>2</sup>**

High load capacity combined with the substantial weight of individual panels ensures safety and reliability when concreting the thickest walls.



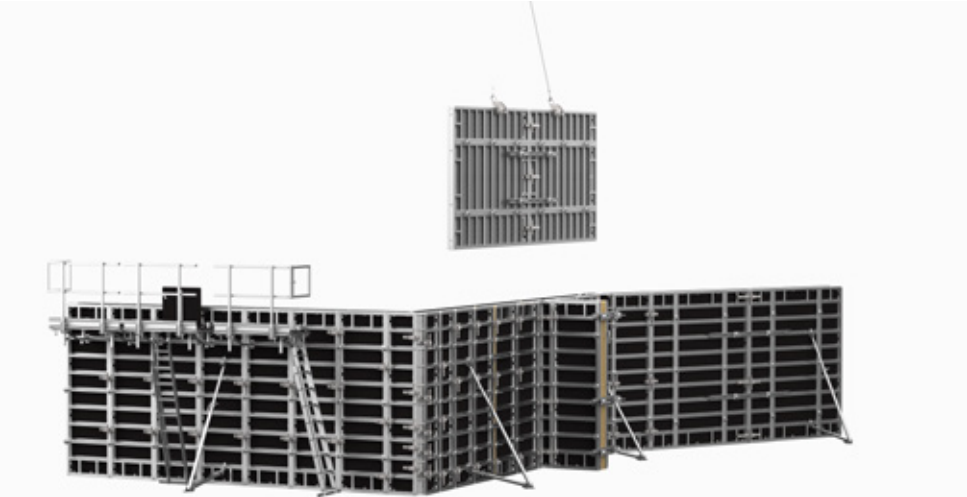
### **Compatible with Rasto and Bauframe**

Compatibility with Bauframe and Rasto systems enables faster and more cost-effective project execution while minimizing assembly errors.

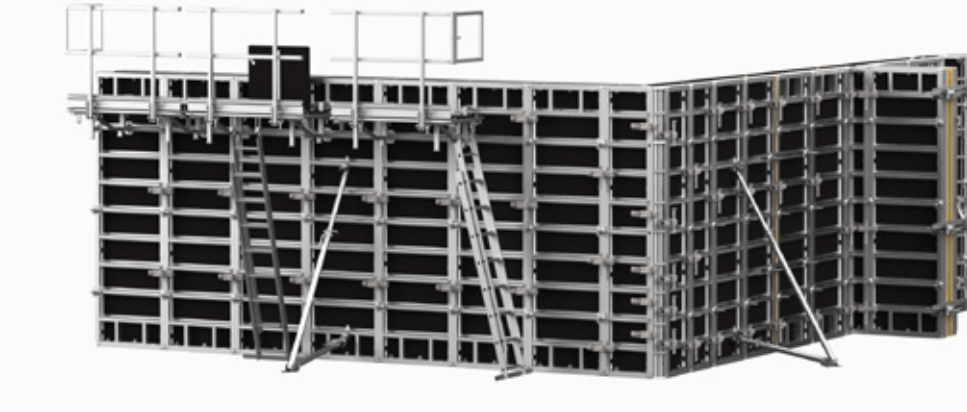
# Project photos



# Example assembly



Fragment of a wall constructed with Bauschal using MAMMUT-type panels



# A few words about the system



## **BAUSCHAL IS CHANGING THE WALL FORMWORK MARKET**

*BAUSCHAL is a well-thought-out product in terms of technical design, functionality, and quality, introducing a new approach to wall formwork usage on construction sites. The knowledge and experience of our team made it possible to develop a solution previously unseen on the market – a set of multi-system profiles. This concept has been submitted for patent protection. The applied solution allows BAUSCHAL to be combined with medium-size BAUFRAME and BAUFRAME ALU systems, as well as other compatible formwork systems. The consistency of accessories – identical across all systems – not only improves on-site usability, but also reduces storage and transport costs. We are confident that the applied solutions will be appreciated by contractors and that BAUSCHAL will become a compelling alternative to existing wall formwork systems.*

**Marek Wilk**  
Production Director  
Member of the Board



# Bauschal panels and corners

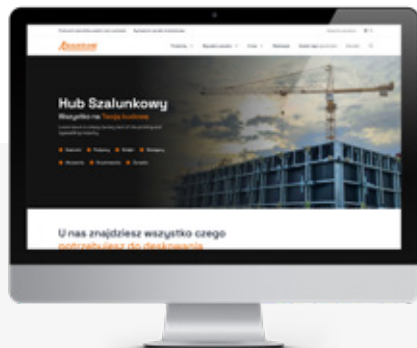
INDEX	NAME	WEIGHT (kg)
7245240300	BAUSCHAL Panel 240x300	397
7245120300	BAUSCHAL Panel 120x300	220,4
7245100300	BAUSCHAL Panel 100x300	195,6
7244190300	BAUSCHAL Panel 90x300 VZ	155,44
7245090300	BAUSCHAL Panel 90x300	146,6
7245075300	BAUSCHAL Panel 75x300	125,8
7245060300	BAUSCHAL Panel 60x300	110,2
7245055300	BAUSCHAL Panel 55x300	104,2
7245050300	BAUSCHAL Panel 50x300	97,07
7245045300	BAUSCHAL Panel 45x300	93,6
7245030300	BAUSCHAL Panel 30x300	78
7245240270	BAUSCHAL Panel 240x270	346,62
7245120270	BAUSCHAL Panel 120x270	188,62
7245100270	BAUSCHAL Panel 100x270	170,66
7244190270	BAUSCHAL Panel 90x270 VZ	139,89
7245090270	BAUSCHAL Panel 90x270	129,38
7245075270	BAUSCHAL Panel 75x270	112,3
7245060270	BAUSCHAL Panel 60x270	97,84
7245045270	BAUSCHAL Panel 45x270	83,99
7245030270	BAUSCHAL Panel 30x270	69,74
7245240150	BAUSCHAL Panel 240x150	218,6
7245120150	BAUSCHAL Panel 120x150	118,9
7245100150	BAUSCHAL Panel 100x150	106,6
7244190150	BAUSCHAL Panel 90x150 VZ	77,72
7245090150	BAUSCHAL Panel 90x150	87,7
7245075150	BAUSCHAL Panel 75x150	75,1
7245060150	BAUSCHAL Panel 60x150	65,8
7245045150	BAUSCHAL Panel 45x150	51,56
7245030150	BAUSCHAL Panel 30x150	42,46
7222B00300	OUTER CORNER BAUFRAHE 0x300	31,1
7222B00270	OUTER CORNER BAUFRAHE0x270	28,02
7241400150	OUTER CORNER BAUFRAHE 0x150	15,68
7241400090	OUTER CORNER BAUFRAHE 0x90	9,52
7246030150	INNER CORNER BAUSCHAL 30x30x150	61,43
7246030270	INNER CORNER BAUSCHAL 30x30x270	99,53
7246030300	INNER CORNER BAUSCHAL 30x30x300	114,2
7241515300	HINGED CORNER BAUFRAHE 15x15x300	74,8
7241515270	HINGED CORNER BAUFRAHE 15x15x270	67,36
7241515150	HINGED CORNER BAUFRAHE 15x15x150	37,62

INDEX	NAME	WEIGHT (kg)
7241515090	HINGED CORNER BAUFRAME 15x15x90	22,8
7241530300	HINGED CORNER BAUFRAME 30x30x300	92,42
7241530270	HINGED CORNER BAUFRAME 30x30x270	82,35
7241530150	HINGED CORNER BAUFRAME 30x30x150	47,83
7241530090	HINGED CORNER BAUFRAME 30x30x90	30,58
7271130150	ELEVATOR SHAFT CORNER 30X150	95
7271030270	ELEVATOR SHAFT CORNER 30X270	136,75
7271030300	ELEVATOR SHAFT CORNER 30X300	184
7271030150	BAUSCHAL ELEVATOR SHAFT CORNER 30X150	101,94
7246130300	BAUSCHAL ELEVATOR SHAFT CORNER 30X300	174
7270000026	BAUSCHAL ELEVATOR SHAFT CORNER KEY	4,95
7270300300	ELEVATOR SHAFT INSERT 300	122,65
7270300270	ELEVATOR SHAFT INSERT 270	113,14
7270300150	ELEVATOR SHAFT INSERT 150	67,8
7270200300	COMPENSATING PLATE 5X300	48,63
7270200270	COMPENSATING PLATE 5X270	43,77
7270200150	COMPENSATING PLATE 5X150	25,09
7270005300	COMPENSATING PLATE 5x300	21,45
7270005270	COMPENSATING PLATE 5x270	18,92
7270005150	COMPENSATING PLATE 5x150	11,66
7271000002	BAUKRANE WEDGE CLAMP	4,2
7271000003	BAUKRANE UNI WEDGE CLAMP	5,5
7271000090	CORNER LOCK	6,5
7270020200	CENTERING PIN BAUSCHAL 20	0,52
7270000030	BOLT TENSIONER 30	0,71
7270000050	BOLT TENSIONER 50	1,02
7270015075	DW-15 TIE ROOD 75 CM	1,12
7270015100	DW-15 TIE ROOD 100 CM	1,5
7270015150	DW-15 TIE ROOD 150 CM	2,25
7270015200	DW-15 TIE ROOD 200 CM	3
7270015300	DW-15 TIE ROOD 300 CM	4,5
7000000070	NUT Ø70	0,46
7000000100	NUT Ø100	0,64
7000120120	113X113 SQUARE ARTICULATED NUT	1,3
7000120000	Ø120 FORGED ARTICULATED NUT	2
7460000058	CENTERING NUT	0,67
7270010650	HEX NUT 50MM	0,21
7500000443	HEX NUT 105MM	0,45
7270200100	STIFFENING BOLT 100	15
7270100080	ALIGNMENT BAR 80	10,6
7270100120	ALIGNMENT BAR 120	15,62
7270100150	ALIGNMENT BAR 150	20,64

INDEX	NAME	WEIGHT (kg)
7270100200	ALIGNMENT BAR 200	25,66
7270100260	ALIGNMENT BAR 260	31,77
7271000300	PUSH-PULL PROP HEAD	1,96
7272000000	PUSH-PULL PROP BASE PLATE	2,8
7271080130	PUSH-PULL PROP 0,9-1,3	8,2
7271050230	PUSH-PULL PROP 1,6-2,4	12,6
7271280470	PUSH-PULL PROP 2,8-4,7	20,6
7250025300	RADIAL WALER 25X300	40,97
7250025270	RADIAL WALER 25X270	36,84
7250025150	RADIAL WALER 25X150	24,19
7250020300	RADIAL WALER 20X300	38,17
7250020270	RADIAL WALER 20X270	34,74
7250020150	RADIAL WALER 20X150	21,02
7250015300	RADIAL WALER 15X300	35,83
7250015270	RADIAL WALER 15X270	32,63
7250015150	RADIAL WALER 15X150	19,85
72700000BB	BAUKRANE TRANSPORT HANDLE	8,5
7100004075	BAUKRANE SUPPORT TRESTLE	245
7100004076	BAUKRANE SUPPORT TRESTLE RESISTANCE	61
7100004077	STRESS BEAM FOR SUPPORT TRESTLE	57
7400000008	WORKING PLATFORM BRACKET	10,5
7410000005	WORKING PLATFORM POST	3,98
7260070145	WORKING PLATFORM 70x145	67,8
7260170145	WORKING PLATFORM 70x145 WITH MANHOLE	69,9
7260070238	WORKING PLATFORM 70x238	98,8
7260071238	WORKING PLATFORM 70x238 WITH MANHOLE	100,8
7260070070	WORKING PLATFORM 70x70	43,2
7260000002	MOVABLE LANDING TOP BARRIER	6,72
7260000001	FIXED LANDING GUARDRAIL	5,74
7260000003	TELESCOPIC LADDER	9,5

CHECK THE  
FULL OFFER

[www.baukrane.pl](http://www.baukrane.pl)



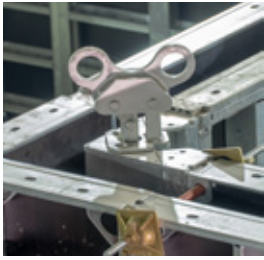
# Elevator shaft corner **BAUSCHAL**

A solution for contractors seeking functional formwork solutions that allow quick execution of elevator shafts. The corner design enables its width to be reduced by 3 cm, which results in moving the internal formwork away from the completed wall by a total of 6 cm.

## Key features

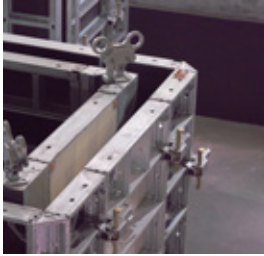
- L** Easy removal of the internal formwork without dismantling the entire system.
- L** Time savings and reduced labor costs.
- L** Safe relocation of the formwork to the next construction stage.
- L** Compatibility with other components of the BAUSCHAL formwork system.
- L** Significant acceleration of elevator shaft construction cycles.





## Ease of assembly

Increasing the width of the corner during formwork installation is achieved by changing the crane lifting point. Our solution allows slings to be attached directly to the lifting brackets integrated into the corner head, eliminating the need for additional accessories

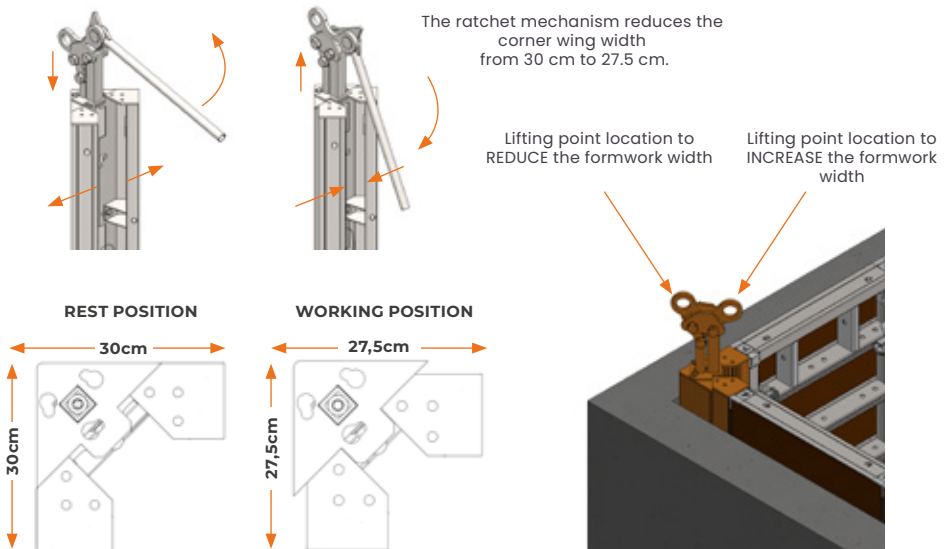


## Compatibility

The BAUSCHAL elevator shaft corner is fully compatible with our other formwork systems. This reduces the amount of equipment required on site and allows the use of panels already applied in wall formwork.

## Ratchet Mechanism – Ease of Operation

The system has been designed with on-site ergonomics in mind. The corner ratchet mechanism is activated from the top using a dedicated key, which initially unlocks the system. Full activation occurs when the formwork is lifted by crane. At that moment, the corner wing width is automatically reduced from 30 cm to 27.5 cm.



# ***SLAB SOLUTIONS***



**PANEL SLAB  
FORMWORK SYSTEM**



**WIDE RANGE OF PLYWOOD  
AND THREE-LAYER PANELS**



**WIDE RANGE OF PROPS  
AND ACCESSORIES**



# BAUDECK

MODERN PANEL SLAB FORMWORK SYSTEM  
FOR FAST SLAB FORMWORKING



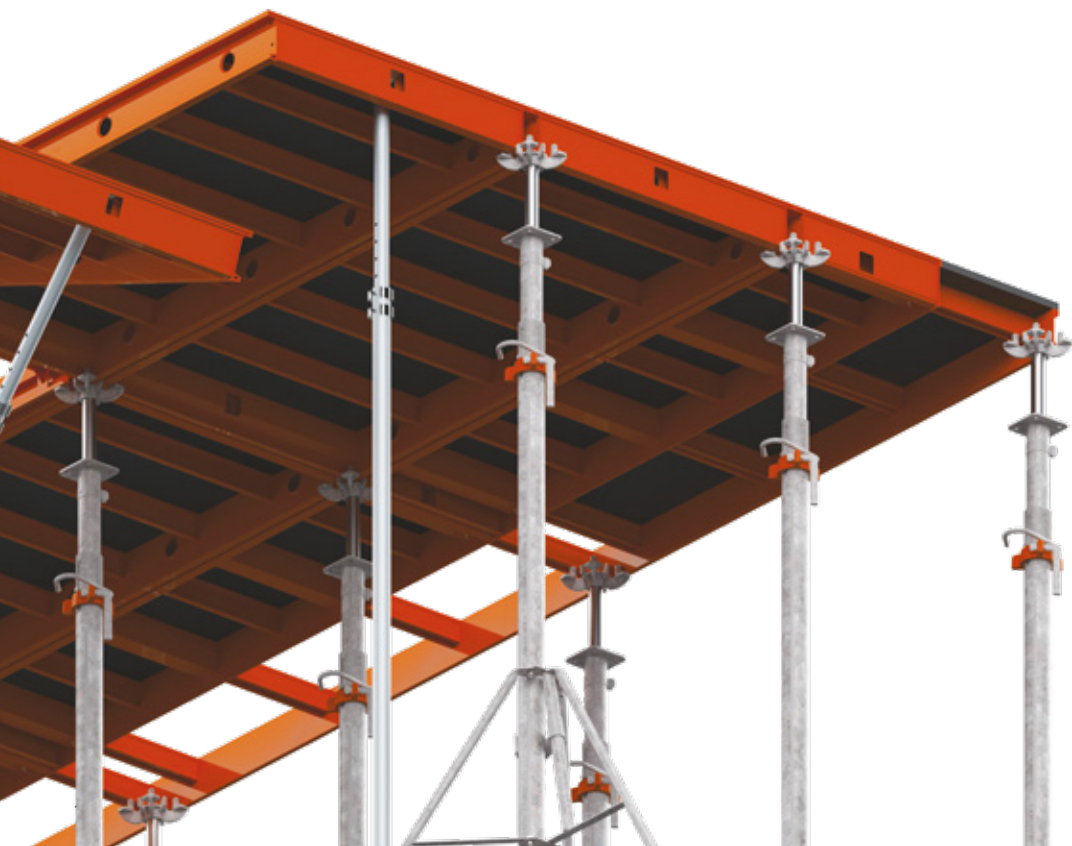
Low panel weight



Rapid slab  
striking system



Compatible with Topec



## Technical data

<b>adjustable panels:</b>	55-90 x 90 cm / 55-90 x 180 cm
<b>frame:</b>	powder-coated 14 cm aluminium profile
<b>shuttering skin:</b>	high-quality birch plywood
<b>average weight:</b>	panel 90×90 cm = 16,00 kg panel 90×180 cm = 27,00 kg panel 180×180 cm = 53,14 kg
<b>compatibility:</b>	TOPEC
<b>assembly time:</b>	0,3 – 0,4 h / m <sup>2</sup>

## Panel dimensions:

**height: 90 cm**  
**width:** 45 · 60 · 75 · 90  
**UNI:** 90

**height: 120 cm**  
**width:** 45 · 60 · 75 · 90 · 180  
**UNI:** 180



## Ideal for:

- residential buildings
- multi-storey office buildings
- large-scale commercial facilities
- multi-level parking structures
- shopping centres

# What makes **BAUDECK** stand out?



## **Adjustable Panel Dimensions**

Thanks to 15 cm panel widths, BAUDECK formwork can be precisely adapted even to complex slab geometries. Special UNI panels extend to fill gaps with inserts ranging from 55–90 cm in width and 90 cm or 180 cm in length.



## **Fast Assembly and Dismantling**

A wide range of panel and beam sizes allows adaptation to virtually any slab layout, eliminating the need for additional infill elements. The use of a drop head enables early striking of the slab without dismantling the props, resulting in significant time and cost savings compared to traditional beam-based systems.



## **Compatible with Standard Slab Props**

When equipped with system heads, BAUDECK can be used with commonly available slab props, class B and above, in accordance with EN 1065.



### **Powder-Coated Aluminium Frame**

The frame consists of a 14 cm high aluminium profile with 73 mm cross members and 2 mm wall thickness. The powder-coated finish facilitates cleaning and reduces concrete adhesion



### **10 mm Birch Plywood Facing**

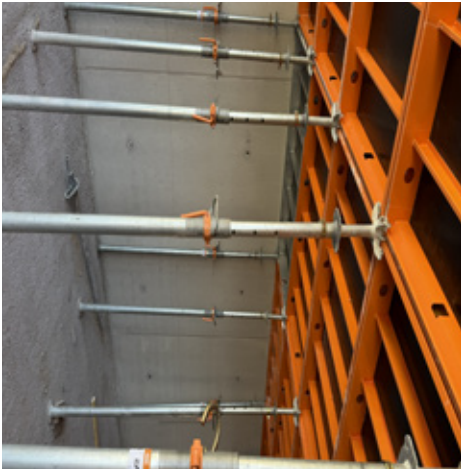
The facing is made of high-quality waterproof birch plywood, fixed with rivets for quick replacement in case of damage.



### **Easy Storage and Transport**

The system can easily be converted into a pallet by turning the BAUDECK panel plywood-side down and installing folding corner brackets. This creates a storage and transport pallet capable of holding 7 panels. It can be handled by crane or forklift. Each corner bracket has a load capacity of 400 kg.

# Project photos



# A few words about the system



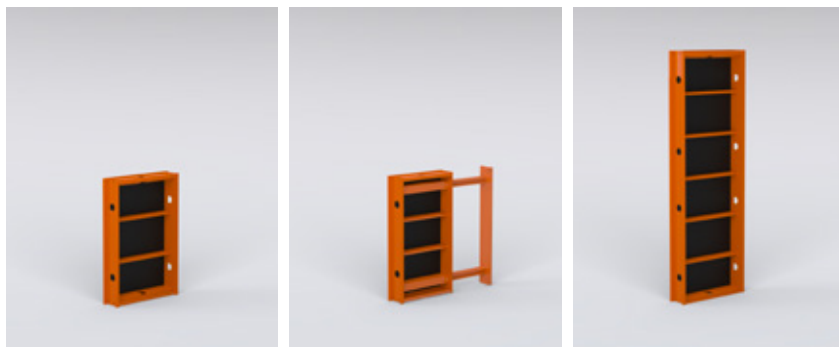
**IDEAL  
SOLUTION FOR  
THOSE WHO  
VALUE TIME  
AND COST  
EFFICIENCY**

*BAUDECK slab formwork is an ideal solution for projects where time efficiency and cost control are critical. Fewer workers required for assembly and dismantling, shorter installation time, reduced storage space, and simplified transport — all translate into measurable financial savings.*

**Wojciech Chruścicki**  
Director of the Wrocław Branch



# BAUDECK panels



BAUDECK

INDEX	NAME	WEIGHT (kg)
7140045090	BAUDECK PANEL 45x90	10,05
7140060090	BAUDECK PANEL 60x90	11,76
7140075090	BAUDECK PANEL 75x90	13,4
7140090090	BAUDECK PANEL 90x90	16
7140005590	BAUDECK PANEL UNI 90	15
7140045180	BAUDECK PANEL 45x180	17,2
7140060180	BAUDECK PANEL 60x180	20,6
7140075180	BAUDECK PANEL 75x180	23,6
7140090180	BAUDECK PANEL 90x180	27
7140180180	BAUDECK PANEL 180x180	53,14
7140055180	BAUDECK PANEL UNI 180	24,5

CHECK THE  
FULL OFFER

[www.baukrane.pl](http://www.baukrane.pl)



# Accessories



INDEX	NAME	WEIGHT (kg)
714000001	BAUDECK RACK	4,75
714000002	BAUDECK ASSEMBLY ROD	3,2
714000010	BAUDECK HEAD	2,5
714000011	BAUDECK HEAD CORNER CAP	0,82
714000013	BAUDECK HEAD SPACER EXTENSION	0,6
7140000110	BAUDECK DROP HEAD	8,2
7140000210	BAUDECK SAFETY HEAD	3,5
7214000001	BAUDECK CROSS BEAM	2,88
7214000008	BAUDECK EDGE SUPPORT	1,8
7214000011	BAUDECK TRAVERSE BEAM 75	3
7214000021	BAUDECK TRAVERSE BEAM 90	3,6
7214000090	BAUDECK COMPENSATION BEAM 90	7,6
7214000180	BAUDECK COMPENSATION BEAM 180	15,2
7214001180	PLASTIC INFILL 180	0,72
7270000004	BAUDECK PIN	0,15
7400000021	BAUDECK GUARDRAIL BRACKET	3,9
7500000909	PROP PROTECTION	0,14



Our technical advisors are at your disposal



+48 570 555 579



sklep@baukrane.pl

# BAUPROP 20

HEAVY-DUTY CONSTRUCTION PROP  
FOR HIGH-LOAD SLAB FORMWORK



**Load capacity**  
**20 kN**



**Prop class**



**Fully hot-dip**  
**galvanized**



**First choice for rental**  
**companies**

# What makes **BAUPROP 20** stand out from other props?



## **Double-thread adjusting nut**

A new double-thread nut enables even faster and easier height adjustment. The double lead reduces the number of turns required to lower the prop – fewer turns means quicker and more convenient adjustment of slab formwork support height.



## **Quick-release mechanism**

Releasing the prop is now simpler and more convenient than ever. Just hit the B-PIN element with a hammer – it moves into the milled pawls and the inner tube drops safely. You don't need to lower the prop all the way to strip the slab formwork. Major time savings.



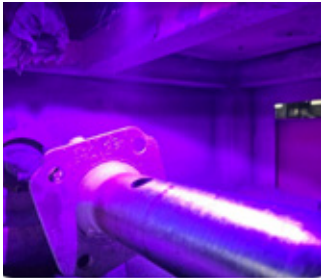
## **Rolled thread**

The thread is rolled after galvanizing, without welds, providing higher strength and improved resistance to cracking and corrosion. A guarantee of durability and reliability in all conditions.



### **Double welds on base plates**

8 mm thick base plates with double welds and clear height marking strengthen the whole structure. Solid workmanship in Class D according to PN-EN 1065 ensures stability and safety on site.



### **Advanced corrosion protection**

Hot-dip galvanizing with UV curing provides even better protection against corrosion. Result: lower maintenance costs and longer service life of Bauprop 20 props.



### **Hand injury protection**

A 10 cm safety zone protects hands from injury during lowering

BAUPROP 20 props meet the load capacity requirements for Class D props according to PN-EN 1065.

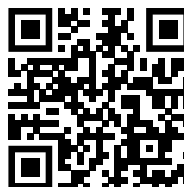
# Technical data

Type of prop	300	350	400	550
Outer tube Ø [mm]	63,0	70,0	76,0	88,0
Outer tube wall thickness	3,0	2,8	2,8	2,8
Inner tube Ø [mm]	51,0	56,0	63,0	76,0
Inner tube wall thickness [mm]	2,8	3,0	3,0	3,0
Base plate thickness [mm]	8,0	8,0	8,0	8,0
Base plate dimensions [mm]	120x120	120x120	120x120	140x140
Minimum working length [mm]	1722	1996	2250	3000
Maximum working length [mm]	3000	3500	4000	5500
Weight [kg]	16,9	18,8	22,5	36,0

# Item codes

INDEX	NAME	WEIGHT (kg)
7120B20300	BAUPROP 20-300	16,9
7120B20350	BAUPROP 20-350	18,8
7120B20400	BAUPROP 20-400	22,5
7120B20550	BAUPROP 20-550	36,0

SCAN THE QR CODE  
**WATCH THE  
BAUPROP 20 VIDEO**



# EASYPROP 20

HOT-DIP GALVANIZED PROP DESIGNED FOR SUPPORTING SLABS AND  
PANEL SLAB FORMWORK SYSTEMS



**Load capacity**  
**20 kN**



**Prop class**



**Fully hot-dip**  
**galvanized**



**Ideal**  
**for larger projects**

# What makes **EASYPROP 20** stand out from other props?



## **Strength and safety – Class B**

A high safety factor of 1.65 provides the required load reserve even under dynamic loads. The prop meets the strict requirements of PN-EN 1065.



## **Rolled external thread**

A seamless thread with full hot-dip galvanizing means the prop does not corrode in typical vulnerable areas. The convenient nut ensures smooth and precise height adjustment. Both the inner and outer tubes are fully hot-dip galvanized.



## **Heavy-duty base plates**

6 mm thick base plates with double welds and galvanized protection ensure durability and stability. The base plate shape meets the requirements of PN-EN 1065.



### Reinforced locking pin

A 14 mm diameter pin with an ergonomic shape guarantees secure locking. A 10 cm hand-protection zone increases safety during slab stripping.



### Versatile use

The central hole diameter allows installation of any head type – standard cross head as well as heads dedicated to the Baudeck panel system



# Technical data

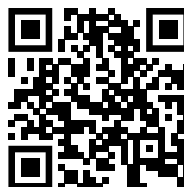
Type of prop	300	350	350
Outer tube Ø [mm]	60,3	60,3	60,3
Outer tube wall thickness	3,2	3,2	3,2
Inner tube Ø [mm]	48,0	48,0	48,0
Inner tube wall thickness [mm]	3,0	3,0	3,0
Base plate thickness [mm]	6,0	6,0	6,0
Base plate dimensions [mm]	120x120	120x120	120x120
Minimum working length [mm]	1722	1996	2500
Maximum working length [mm]	3000	3500	4000
Weight [kg]	14,6	16,5	18,5

## Item codes

INDEX	NAME	WEIGHT (kg)
7120001300	EASYPROP 300	14,6
7120001350	EASYPROP 350	16,5
7120001400	EASYPROP 400	18,5

SCAN THE QR CODE

**WATCH THE  
EASYPROP 20 PROP VIDEO**



# ECOPROP

AN ALTERNATIVE TO POPULAR PAINTED "ITALIAN-TYPE" PROPS. EASY OPERATION THANKS TO THE ADJUSTING NUT ON THE EXTERNAL THREAD AND FULL ELECTRO-GALVANIZED FINISH



**Load capacity**  
**14 kN**



**Fully hot-dip**  
**galvanized**



**Excellent value**  
**for money**

# What makes **ECOPROP** stand out from other props?



## **External thread with cast adjusting nut**

The external thread with a cast nut speeds up and simplifies height adjustment, significantly reducing the time required for slab stripping.



## **10 cm hand-protection zone**

The safety zone protects hands against unexpected prop drop, minimizing the risk of injury during work.



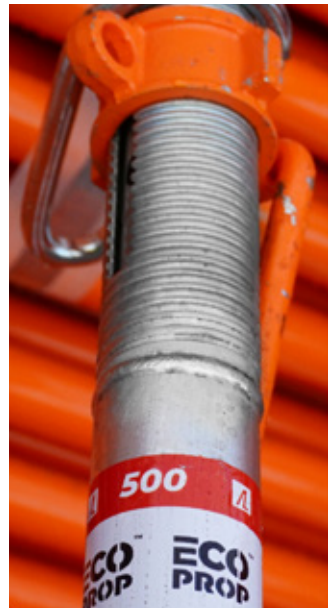
## **Galvanized prop**

Full galvanizing of the inner and outer tubes extends service life and improves resistance to harsh weather conditions.



## Popular sizes

Available in standard lengths: 3.0 m, 3.5 m, 4.0 m, and 5.0 m.



# Technical data

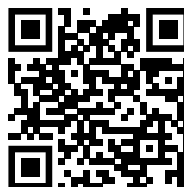
Type of prop	300	350	400	500
Outer tube Ø [mm]	60,0	60,0	60,0	60,0
Outer tube wall thickness	1,8	1,8	2,0	2,0
Inner tube Ø [mm] 50	50,0	50,0	50,0	50,0
Inner tube wall thickness [mm]	1,8	1,8	2,2	2,2
Base plate thickness [mm]	5,0	5,0	5,0	5,0
Base plate dimensions [mm]	120x120	120x120	120x120	120x120
Minimum working length [mm]	1750	2100	2210	2800
Maximum working length [mm]	3000	3500	4000	5000
Weight [kg]	9,4	10,5	13,3	16,0

## Item codes

INDEX	NAME	WEIGHT (kg)
712100E300	ECOPROP 300	9,4
712100E350	ECOPROP 350	10,5
712100E400	ECOPROP 400	13,3
712100E500	ECOPROP 500	16

SCAN THE QR CODE

**WATCH THE  
ECOPROP 20 PROP VIDEO**



# BAUKRANE ECO 20

A VERSATILE CONSTRUCTION PROP,  
IDEAL FOR BEAM AND PRECAST SLABS



**Load capacity**  
**20 kN**



**Fully hot-dip**  
**galvanized**

## **Key features:**

- 10 cm hand-protection zone
- Ergonomic handle and external thread
- Hot-dip galvanized product
- Solid 6 mm base plate



**Cost-effective**  
**for larger projects**

# Technical data

Type of prop	300	350
Outer tube Ø [mm]	60,0	60,0
Outer tube wall thickness	3,0	3,0
Inner tube Ø [mm]	48,0	48,0
Inner tube wall thickness [mm]	3,0	3,5
Base plate thickness [mm]	6,0	6,0
Base plate dimensions [mm]	120x120	120x120
Minimum working length [mm]	1750	2100
Maximum working length [mm]	3000	3500
Weight [kg]	14,8	16,5

## Indexy

INDEX	NAME	WEIGHT (kg)
7220020300	PROP 300 BAUKRANE ECO	14,8
7220020350	PROP 350 BAUKRANE ECO	16,5



Our technical advisors are at your disposal



+48 570 555 579



sklep@baukrane.pl

# **POWDER-COATED PROP**

LIGHTWEIGHT AND VERSATILE PROP – IDEAL FOR SIMPLE APPLICATIONS  
AND TEMPORARY SUPPORTS



**Lightweight  
and easy to use**

## **Key features:**

---

- Smooth height adjustment
- Adjusting nut and locking pin
- Powder coating
- 5 mm base plate



**An alternative to  
“Italian-type” props**

# Technical data

	Type of prop	300	350
	Outer tube Ø [mm]	56,0	56,0
	Outer tube wall thickness	1,6	1,6
	Inner tube Ø [mm]	48,0	48,0
	Inner tube wall thickness [mm]	1,8	1,8
	Base plate thickness [mm]	5,0	5,0
	Base plate dimensions [mm]	120x120	120x120
	Minimum working length [mm]	1750	2030
	Maximum working length [mm]	3000	3500
	Weight [kg]	8,6	9,8

# Item codes

INDEX	NAME	WEIGHT (kg)
7121000300	POWDER-COATED PROP 300	8,6
7121000350	POWDER-COATED PROP 350	9,8



Our technical advisors are at your disposal



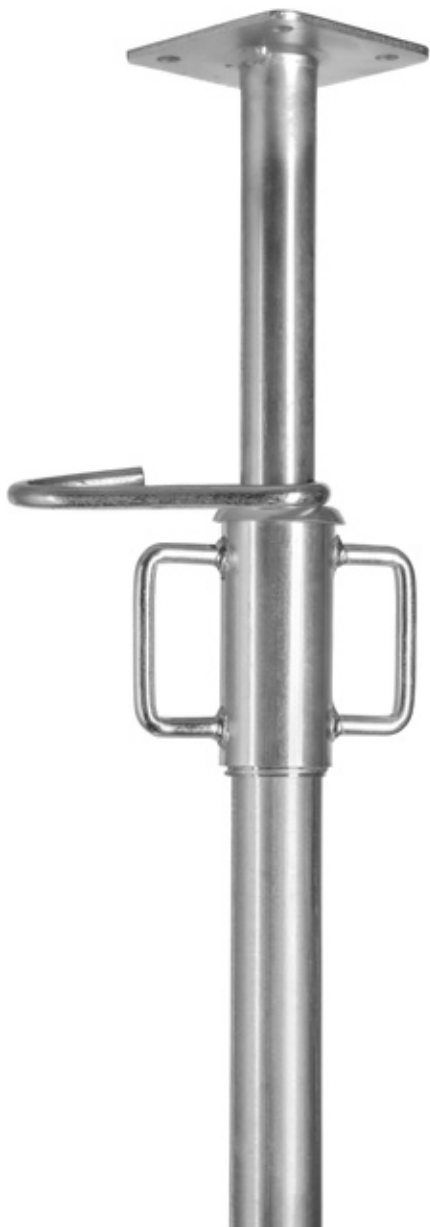
+48 570 555 579



sklep@baukrane.pl

# ***LIGHT GALVANIZED PROP***

LIGHTWEIGHT GALVANIZED SLAB PROP



**Galvanized  
protection**

## **Key features:**

- Smooth height adjustment
- Adjusting nut and locking pin
- Galvanized protection
- 5 mm base plate



**Ideal for light-duty  
applications**

# Technical data

	Type of prop	300	350
	Outer tube Ø [mm]	48,0	48,0
	Outer tube wall thickness	1,6	1,6
	Inner tube Ø [mm]	40,0	40,0
	Inner tube wall thickness [mm]	1,8	1,8
	Base plate thickness [mm]	5,0	5,0
	Base plate dimensions [mm]	120x120	120x120
	Minimum working length [mm]	1800	2000
	Maximum working length [mm]	3200	3600
	Weight [kg]	7,9	8,6

# Item codes

INDEX	NAME	WEIGHT (kg)
7220000320	LIGHT GALVANIZED PROP 3,2m	7,9
7220000360	LIGHT GALVANIZED PROP 3,6m	8,6



Our technical advisors are at your disposal



+48 570 555 579



sklep@baukrane.pl

# Tripods



## TRIPOD FOR CONSTRUCTION PROPS 5 KG EG

**Weight:** 5 kg

**Finish:** electro-galvanized (EG)

**Function:** swiveling legs allow positioning close to walls

**Compatibility:** fits most props available on the market



## BAUKRANE TRIPOD FOR CONSTRUCTION PROPS 7.5 KG HDG

**Weight:** 7.5 kg

**Finish:** hot-dip galvanized (HDG)

**Function:** swiveling legs allow positioning close to walls

**Compatibility:** fits most props available on the market

CHECK THE  
FULL OFFER

[www.baukrane.pl](http://www.baukrane.pl)



# Heads



## ANGLE CROSS HEAD EG

**Weight:** 2.5 kg  
**Finish:** galvanized  
**Load:** dedicated for 20 kN props  
**Compatibility:** H20, BT20 beams



## ANGLE CROSS HEAD LIGHT

**Weight:** 1.4 kg  
**Finish:** galvanized  
**Load:** dedicated for 20 kN props  
**Compatibility:** H20, BT20 beams



## ANGLE CROSS HEAD HDG

**Weight:** 2.3 kg  
**Finish:** galvanized  
**Load:** dedicated for 20 kN props  
**Compatibility:** H20, BT20 beams



Our technical advisors are at your disposal



+48 570 555 579



sklep@baukrane.pl

# Beams

PREMIUM, STANDARD AND ECO VERSIONS



## BT20 PREMIUM BEAM

Top quality and durability. Web made of three-layer board – 27 mm. Spruce timber grade C24 in accordance with EN 338:1995. Low weight – high strength.

INDEX	NAME	WEIGHT [kg]
7110PR0180	BT20 Premium Beam 1,80m	7,9
7110PR0210	BT20 Premium Beam 2,10m	9,2
7110PR0245	BT20 Premium Beam 2,45m	10,8
7110PR0265	BT20 Premium Beam 2,65m	11,7
7110PR0290	BT20 Premium Beam 2,90m	12,8
7110PR0330	BT20 Premium Beam 3,30m	14,5
7110PR0360	BT20 Premium Beam 3,60m	15,8
7110PR0390	BT20 Premium Beam 3,90m	17,2



## BT20 BEAM

Top beam with full end fittings, web made of 27 mm three-layer board. Spruce timber grade C24 in accordance with EN 338:1995.

INDEX	NAME	WEIGHT [kg]
711000P120	BT20 Beam 1,20 m	5,8
711000P150	BT20 Beam 1,50 m	7,2
711000P180	BT20 Beam 1,80 m	9,8
711000P245	BT20 Beam 2,45 m	11,7
711000P265	BT20 Beam 2,65 m	12,7
711000P290	BT20 Beam 2,90 m	13,9
711000P300	BT20 Beam 3,00 m	14,4
711000P330	BT20 Beam 3,30 m	15,8
711000P360	BT20 Beam 3,60 m	17,3
711000P390	BT20 Beam 3,90 m	18,7
711000P420	BT20 Beam 4,20 m	20,5
711000P450	BT20 Beam 4,50 m	21,6
711000P490	BT20 Beam 4,90 m	23,5



## BT20 ECO BEAM

Austrian quality at an attractive price. Solid web and chamfered ends. Compliant with EN 13377.

INDEX	NAME	WEIGHT [kg]
711000F190	BT20 Beam ECO 1,90 m	9,69
711000F210	BT20 Beam ECO 2,10 m	10,71
711000F245	BT20 Beam ECO 2,45 m	12,50
711000F265	BT20 Beam ECO 2,65 m	13,50
711000F290	BT20 Beam ECO 2,90 m	14,80
711000F330	BT20 Beam ECO 3,30 m	16,80
711000F360	BT20 Beam ECO 3,60 m	18,40
711000F390	BT20 Beam ECO 3,90 m	19,90
711000F420	BT20 Beam ECO 4,20 m	21,42
711000F450	BT20 Beam ECO 4,50 m	23,00



Our technical advisors are at your disposal



+48 570 555 579



sklep@baukrane.pl

# ***PLYWOOD***



**WIDE RANGE  
OF PLYWOOD**



**PHENOLIC FILM  
PROTECTION**



**TRADITIONAL, PLASTIC  
AND ANTI-SLIP FACINGS**



# Plywood

STANDARD, PREMIUM AND ECO VERSIONS



## STANDARD THREE-LAYER BOARD

**Sheet width:** 500 mm  
**Sheet length:** 1500 mm, 2000 mm, 2500 mm or 3000 mm  
**Sheet thickness:** 21mm or 27 mm

Coated with melamine resin **130 g/m<sup>2</sup>**

**Wood species:** spruce



## PREMIUM THREE-LAYER BOARD

**Sheet width:** 500 mm  
**Sheet length:** 1500 mm, 2000 mm, 2500 mm or 3000 mm  
**Sheet thickness:** 21mm or 27 mm

**Edges:** perimeter edges, type C or E

Coated with melamine resin **150 g/m<sup>2</sup>**

Product from Austrian manufacturers with the highest quality standards.

**Wood species:** spruce



## TOP FORM PLYWOOD

2500 × 1250 × 18 [mm]  
2500 × 1250 × 21 [mm]

Equivalent to birch plywood with very high strength and density. Designed for architectural concrete — guarantees an ultra-smooth surface.

Coated with black (optional brown) phenolic film **400 g/m<sup>2</sup>**

**Wood species:** rubberwood

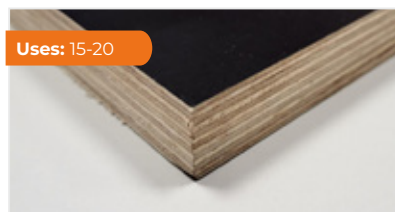


## PRO FORM PLYWOOD

2500 × 1250 × 18 [mm]  
2500 × 1250 × 21 [mm]

Coated with black (optional brown) phenolic film **130 g/m<sup>2</sup>**

**Wood species:** rubberwood



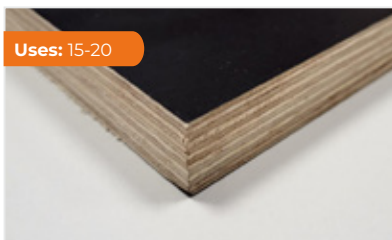
## EZ FORM PLYWOOD

2500 × 1250 × 18 [mm]  
2500 × 1250 × 21 [mm]

Alternatywa dla sklejkii brzożowej.

Coated with black (optional brown) phenolic film **130 g/m<sup>2</sup>**

**Wood species:** rubberwood



Uses: 15-20

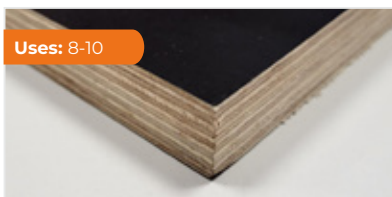
### SKLEJKA PLUS FORM

2500 × 1250 × 21 [mm]    2000 × 500 × 27 [mm]  
2000 × 500 × 21 [mm]    2500 × 500 × 27 [mm]  
2500 × 500 × 21 [mm]

Alternative to birch plywood.

Coated with black (optional brown) phenolic film **165 g/m<sup>2</sup> or 130 g/m<sup>2</sup>**

**Wood species:** mix of exotic hardwood



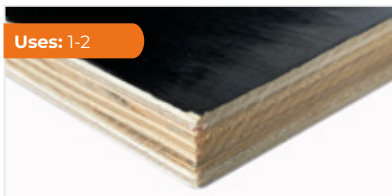
Uses: 8-10

### STANDARD FORM PLYWOOD

2500 × 1250 × 18 [mm]  
2500 × 1250 × 21 [mm]

Coated with black (optional brown) phenolic film **160 g/m<sup>2</sup>**

**Wood species:** acacia



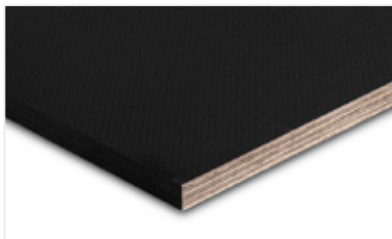
Uses: 1-2

### RECYCLED ECO PLYWOOD

2500 × 1250 × 21 [mm]

Budget plywood

Coated with black (optional brown) phenolic film **170 g/m<sup>2</sup>**



### ANTI-SLIP HEXA PLYWOOD

2500 × 1250 × 9 [mm]  
2500 × 1250 × 12 [mm]  
2500 × 1250 × 15 [mm]  
2500 × 1250 × 18 [mm]  
2500 × 1250 × 21 [mm]

Durable and robust solution with an anti-slip surface.

**Wood species:** rubberwood



### M-BOARD

**Thickness:** 8mm - 30 mm (every 0,5mm)

**Dimensions:** length up to 6000 mm, width up to 1250 mm

The M-Board panel is a modern solid plastic composite panel, developed as a durable, reusable alternative to traditional plywood in formwork systems and other demanding construction applications.

# **P70**

# **SCAFFOLDING**



**READY-MADE  
SETS**



**SIMPLE AND  
FAST ASSEMBLY**



**PLETTAC  
TYPE**



# P70 SCAFFOLDING SYSTEM

The P70 scaffolding system (Plettac type) is a key element of modern construction sites, where fast assembly, safety, and cost optimization are essential.

P70 features frames made of hot-dip galvanized steel, ensuring exceptional durability and resistance to harsh weather conditions typical for construction environments.

The scaffold structure has been designed for maximum stability – rigid connections, reinforced safety components, and self-locking pins eliminate the risk of accidental platform disengagement during work at height.

The P70 scaffolding system allows efficient scaffolding of structures with various shapes and heights. Assembly is so intuitive that it can be performed by a single worker – up to 250 m<sup>2</sup> per day. This directly translates into significant labor cost reduction and shorter project schedules.



# COMPATIBILITY AND VERSATILITY

The P70 scaffold is fully compatible with other Plettac-type systems, allowing for:

**A** integration with existing site equipment,

**A** optimization of construction logistics,

**A** gradual expansion of technical facilities,

**A** reduction of warehouse index variety.

# ECONOMY AND EFFICIENCY ON SITE

The P70 system is primarily functional and easy to use:

**A** simple design enables fast assembly and dismantling without specialist tools,

**A** modularity allows optimal use of available scaffold elements,

**A** durable components ensure long-term use without frequent replacement,

**A** lightweight construction facilitates transport and storage.



## SET COMPONENTS

Adjustable base  $\varnothing 38 - 0.50$  m

Steel frame  $2.00 \times 0.70$  m P70

Lower bracing mount P70

Bracing for  $3.00$  m fird P70

Upper end frame  $1.00 \times 0.70$  m P70

Guardrail post with protection  $1.00 \times 0.70$  m P70

Aluminium-plywood deck with hatch and ladder  $3.00$  m P70

Wooden deck  $3.00$  m P70

Longitudinal guardrail  $3.00$  m P70

Double end guardrail UNI  $0.70$  m P70

Anchoring connector  $0.60$  m

Cross joint  $48/48$

Eye bolt 300



INDEX	NAME	WEIGHT (kg)
7400000230	EYEBOLT 230	0,2
7400000280	EYEBOLT 280	0,25
7400000350	EYEBOLT 350	0,35
7400003434	SWIVEL COUPLER 34/34	1,075
7400004200	STEEL LATTICE GRIDER 420	40
7400004848	SWIVEL COUPLER 48/48	1,5
7400007700	STEEL LATTICE GRIDER 770	79
7400024848	DOUBLE CLAMP 48/48MM LIGHT	1,24
7400034848	SWIVEL CLAMP 48/48MM LIGHT	1,1
7460000005	END TOEBOARD 0,70M P70	2
7460000006	TOEBOARD FOR DECKS 2,00M P70	4
7460000007	TOEBOARD FOR DECKS 3,00M P70	5,9
7460000008	DIAGONAL FIXING BRACKET P70	0,4
7460000009	SIDE BRACKET 0,32M P70	4,2
7460000010	SIDE BRACKET 0,64M P70	8
7460000013	ALUMINUM AND PLYWOOD PLATFORM WITH MANHOLE P-70 3,00M	24,2
7460000014	TIMBER DECK 2,00M P70	14,6
7460000015	TIMBER DECK 3,00M P70	21,6
7460000016	GUARDRAIL 0,70M P70	1,4
7460000017	GUARDRAIL 2,00M P70	2,7
7460000018	GUARDRAIL 3,00M P70	4,9
7460000019	DOUBLE END GUARDRAIL UNI 0,70M P70	2,8
7460000020	STEEL VERTICAL FRAME 1,00X0,70M P70	10
7460000021	STEEL FRAME 1,00X0,70M P70	9
7460000022	STEEL FRAME 2,00X0,70M P70	19
7460000023	STEEL GUARDRAIL SUPPORT 1,00X0,70M P70	4,8
7460000024	DIAGONAL 3,00M P70	10
7460000027	GRAVITY PIN COUPLER P70	0,9
7460000028	STEEL FRAME 1,50X0,70M P70	16,5
7460000029	INTERMEDIATE TRANSOM 0,70M P70	3,8
7460000030	SIDE BRACKET 0,74M P70	8,4
7460000033	ANCHOR CONNECTOR 0,3m	1
7460000034	ANCHOR CONNECTOR 0,5m	1,6
7460000035	ANCHOR CONNECTOR 0,6m	1,8
7460000048	DOUBLE COUPLER 48/48	1,2
7460000049	HALF COUPLER 48	0,6
7460000050	BASE JACK Ø38 0,30M	2,4

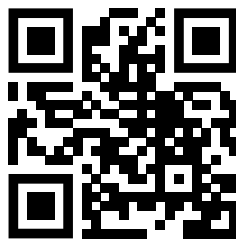
INDEX	NAME	WEIGHT (kg)
7460000051	BASE JACK Ø38 0,40M	2,6
7460000052	BASE JACK Ø38 0,50M	2,8
7460000053	BASE JACK Ø38 0,60M	3,2
7460000054	SWIVEL BASE JACK 0,30M	0
7460000055	EYEBOLT 300	0,3
7460000057	EYEBOLT 400	0,37
7460000059	ANCHOR CONNECTOR 1,0m	3,2
7460000061	DIAGONAL 2,00M P70	5,8
7460000062	DIAGONAL 2,50M P70	7,2
7460000063	STEEL GUARDRAIL WITHOUT SUPPORT 1,00M P70	3
7460000066	GUARDRAIL 1,50M P70	2,4
7460000067	GUARDRAIL 2,50M P70	2,9
7460000078	BASE JACK Ø38 1,10M	4,4
7460000079	STEEL DECK 3,00M P70	19
7460000080	MOBILE BEAM 1.70M P70	15
7460000081	TOEBOARD FOR DECKS 1,10M P70	2,5
7460000082	TOEBOARD FOR DECKS 1,50M P70	3,1
7460000083	TOEBOARD FOR DECKS 2,50M P70	5,4
7460000084	END TOEBOARD 0.70M P70	2
7460000085	ALUMINUM AND PLYWOOD PLATFORM WITH MANHOLE P-70 2,50M	22,1
7460000086	TIMBER DECK 0,70M P70	6,5
7460000087	TIMBER DECK 1,10M P70	10,2
7460000088	TIMBER DECK 1,50M P70	14
7460000089	STEEL DECK 0,70M P70	5,7
7460000090	STEEL DECK 1,10M P70	7,6
7460000091	STEEL DECK 1,50M P70	10,2
7460000092	STEEL DECK 2,00M P70	13,4
7460000093	STEEL DECK 2,50M P70	16,5
7460000095	GUARDRAIL 1,10M P70	2,1
7460000096	FALL ARREST FRAME 2,00X0,70M P70	20,5
7460000097	STEEL FRAME 0,50X0,70M P70	5
7460000098	DIAGONAL 1,50M P70	7
7460000099	BASE JACK Ø38 1,00M	4,2
7460000100	BASE JACK Ø38 0,80M	5,2
7460000125	SCAFFOLDING PROTECTIVE NET 2.57X10 M	17,75
7460000128	TIMBER DECK 2,5M P70	6
7460000129	ROAD WHEEL P70	1,65

<b>INDEX</b>	<b>NAME</b>	<b>WEIGHT (kg)</b>
7460000130	BOOM P-70	13,4
7460000131	STAIRCASE TRANSOM 0,7 P70	3,3
7460000132	STAIRCASE TRANSOM 1,1M P70	0
7460000133	SIDE BRACKET WITHOUT PIN 0,32M P70	4
7460000134	GUARDRAIL 1,50M HDG P70	2,52
7460000135	GUARDRAIL 2,00M HDG P70	2,84
7460000136	GUARDRAIL 2,50M HDG P70	3,05
7460000137	GUARDRAIL 3,0M HDG P70	5,15
7460000141	SWIVEL BASE PLATE 0,50M	3
7460000143	ANCHOR CONNECTOR 1,1m	3,4
7460000144	ANCHOR CONNECTOR 1,5m	5,2
7460000146	STEEL DECK 1,50 P70	10,13
7460000147	STEEL DECK 2,00 P70	13,07
7460000148	STEEL DECK 3,00 P70	19,35
7460000149	BRACKET 0,96m P70	12
7460000150	STEEL VERTICAL FRAME 2.00x0.70M WITH 4 LUGS P70	5,45
7460000152	END TOEBOARD 0,70M P70	1,4
7460000153	RIGHT-ANGLE COUPLER 48/60	1,5
7460000154	SWIVEL COUPLER 48/60	1,5
7460000156	STEEL DECK 0,70M PREMIUM P70	5,8
7460000157	STEEL DECK 1,10M PREMIUM P70	7,76
7460000158	STEEL DECK 1,50M PREMIUM P70	10,4
7460000159	STEEL DECK 2,00M PREMIUM P70	13,7
7460000160	STEEL DECK 2,50M PREMIUM P70	15,9
7460000161	STEEL DECK 3,00M PREMIUM P70	19,1
7460000166	CORRECTION FRAME 50	8,9
7460000167	CORRECTION FRAME 100	12,2
7460000168	PP SLEEVE FOR EXPANSION ANCHOR 14.0X70	0,008
7460000367	HALF COUPLER 34	0,54
7460006040	ANCHOR CONNECTOR 0,4m	1,4
7460006120	ANCHOR CONNECTOR 1,2m	3,6
7460006130	ANCHOR CONNECTOR 1,3m	4,58



**RUSZTOWANIOWY.pl**  
AUTORYZOWANY  
DYSTRYBUTOR | **BAUKRANE**

SCAN QR CODE  
**ORDER ONLINE**



# ***ACCESSORIES***



**WIDE RANGE OF  
ACCESSORIES**



**HIGH STOCK  
AVAILABILITY**



**FAST DELIVERY TO THE  
CONSTRUCTION SITE**



# Lost formwork accessories

We supply a full range of lost formwork elements and concrete accessories that directly influence the durability and quality of reinforced concrete structures. We ensure high availability of products in various variants, tailored to project specifics and structural requirements. Accessories can be successfully used in building construction, infrastructure, industrial projects, and precast production.

## Plastic accessories



---

Point spacer

---

Plastic line spacer BK

---

Plastic line spacer DL

---

Plastic line space ZZ

---

Triangular strip

---

Safety cover

---

Large point safety cap

---

Mini point safety cap

---

Mounting plate

---

Concrete washer "barrel"

---

Spacer Multifix

---

PCV pipe

---

PCV plastic cone

---

PCV tube plug

---

Connector for PCV pipes

## Concrete accessories



---

Concrete spacer

---

Concrete smooth plug

---

Cement plug "cylinder"

---

Concrete washer with wire "flat contact"

---

Concrete washer "block"

---

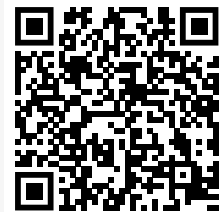
Concrete washer "bone"

---

Concrete pipe

CHECK THE LAST  
FORMWORK ACCESSORIES  
CATALOGUE

**SCAN THE QR CODE**



## Antiadhesive oils, glues, foams



Glue Repocal

gun foam

Antiadhesive oil Ekobet

Antiadhesive oil Premium LM

Antiadhesive oil Shole Develop

Antiadhesive oil Shole Develop Economy

Antiadhesive oil Shole Develop OCL

Antiadhesive oil Shole Develop White

Antiadhesive oil Szalmax

Formwork cleaner oil

## Sealing solutions



iFLEX sealing tape roll

FLUPP rubber plug

iFLEX construction joint cross

Octagon

Octagon cone

Mesh for installation of bentonite tape

Bentonite tape

## Steel accessories



Tie wire

Anchoring element

Nails

Wavy anchor

Expansion anchor

Hook anchor

Wire washer "snake"

Lost formwork STC

Spring clamp

Wire tension key

Hexagon nut



**Our technical advisors are at your disposal**



**+48 570 555 579**



**sklep@baukrane.pl**



**+48 570 555 579**

**sklep@baukrane.pl**

**www.BAUKRANE.pl**

---

**Gdańsk**

ul. Jana Keplera 36,  
80-299 Gdańsk  
+48 58 345 11 77  
gdansk@baukrane.pl

**Kraków**

ul. Majdzika 18,  
32-050 Skawina  
+48 790 614 000  
krakow@baukrane.pl

**Warszawa**

Koszajec 12,  
05-840 Brwinów  
+48 537 279 408  
warszawa@baukrane.pl

**Wrocław Biuro Handlowe**

ul. Wrocławska 2b/13  
55-093 Brzezia Łąka  
+48 786 100 397  
wroclaw@baukrane.pl